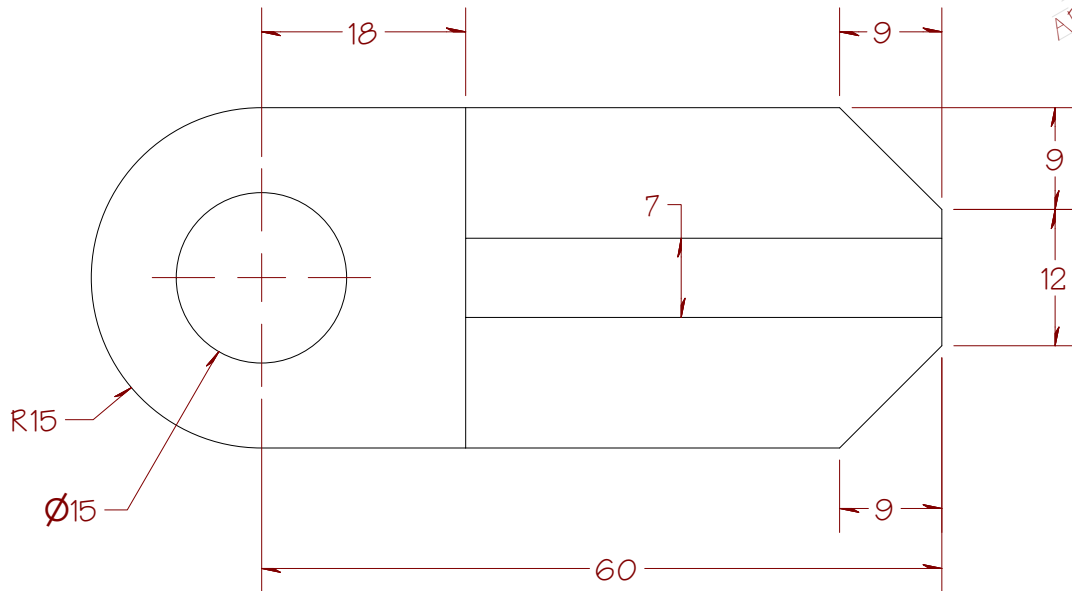
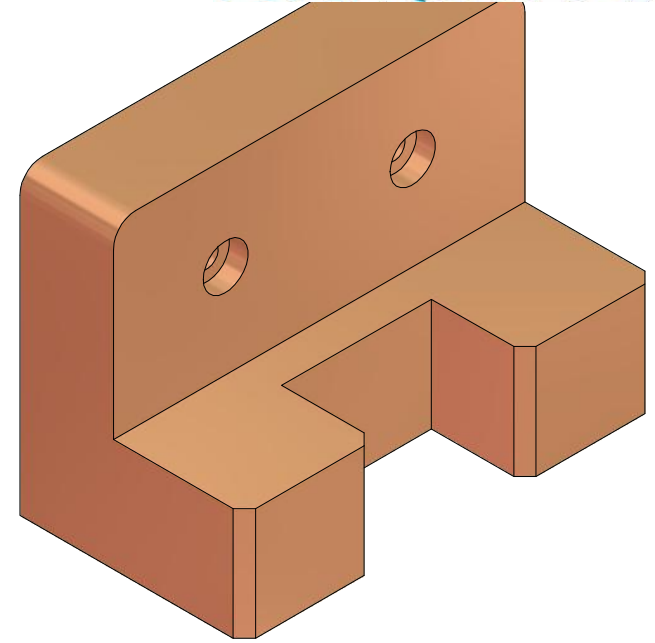
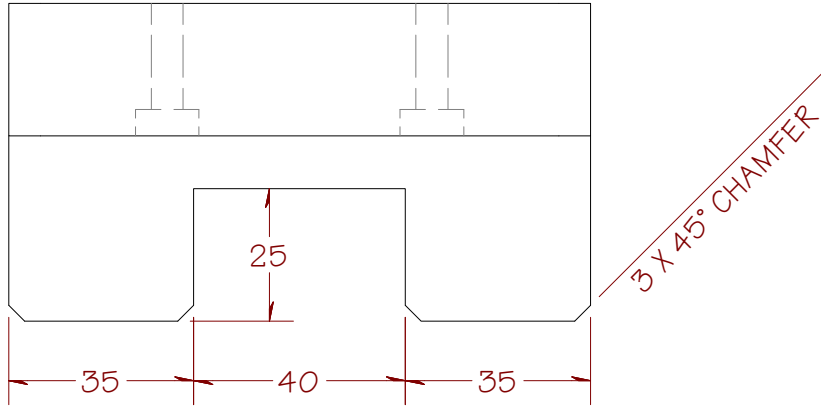


ALL DIMENSIONS
ARE IN MILLIMETERS

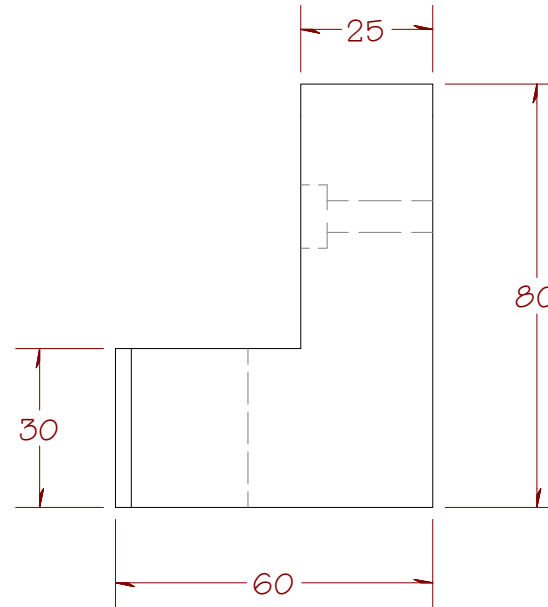
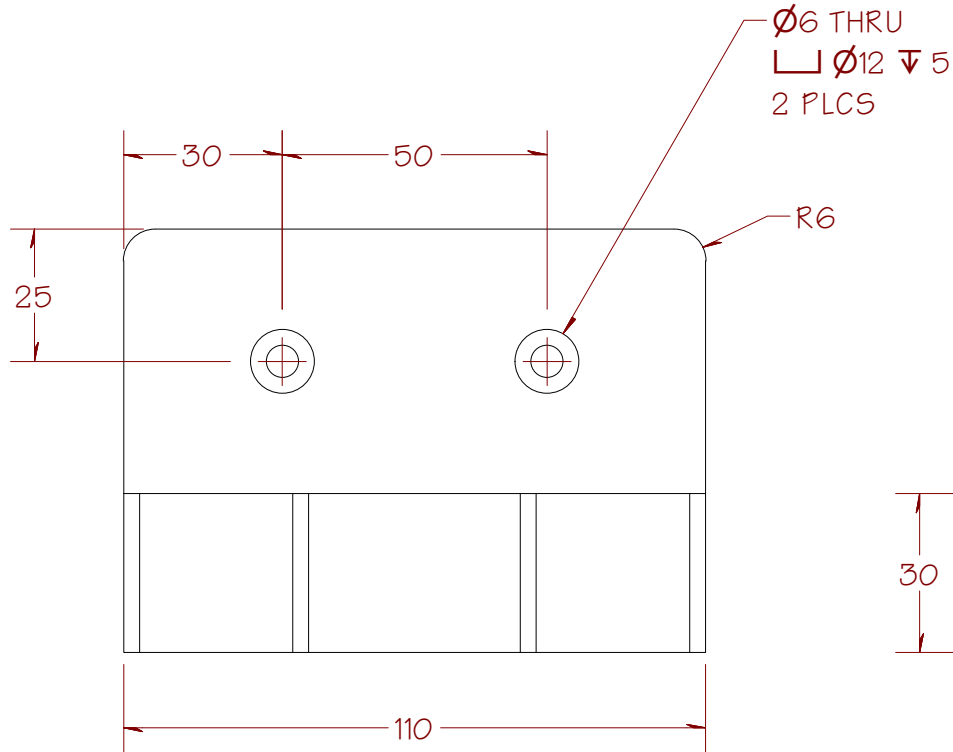


SHEET 2 OF 25

<p>FROM THE DESK OF CURTIS WAGUESPACK</p>	<p>FILE NAME Fixture Block.ipt</p>
	<p>DESCRIPTION Hardware, Fixture Block</p>

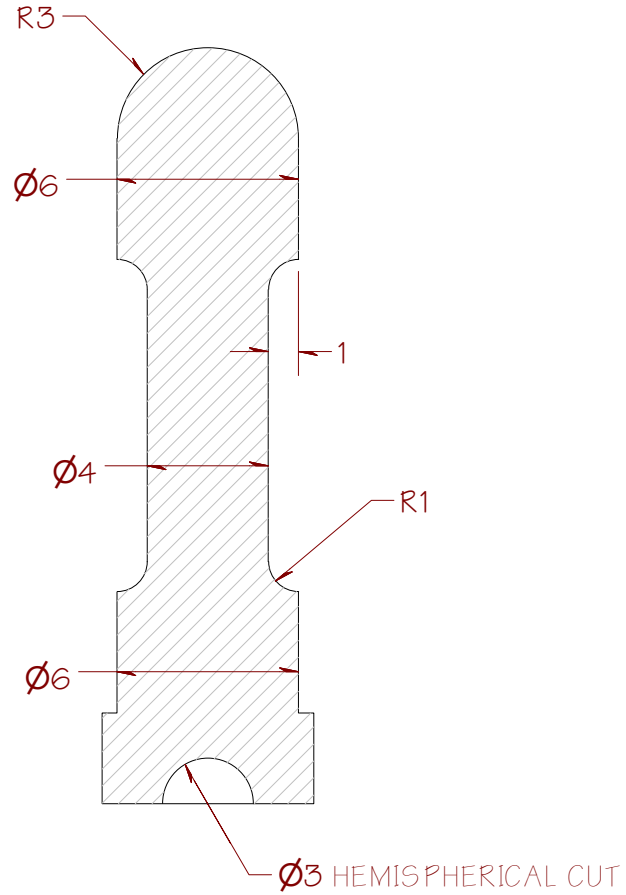
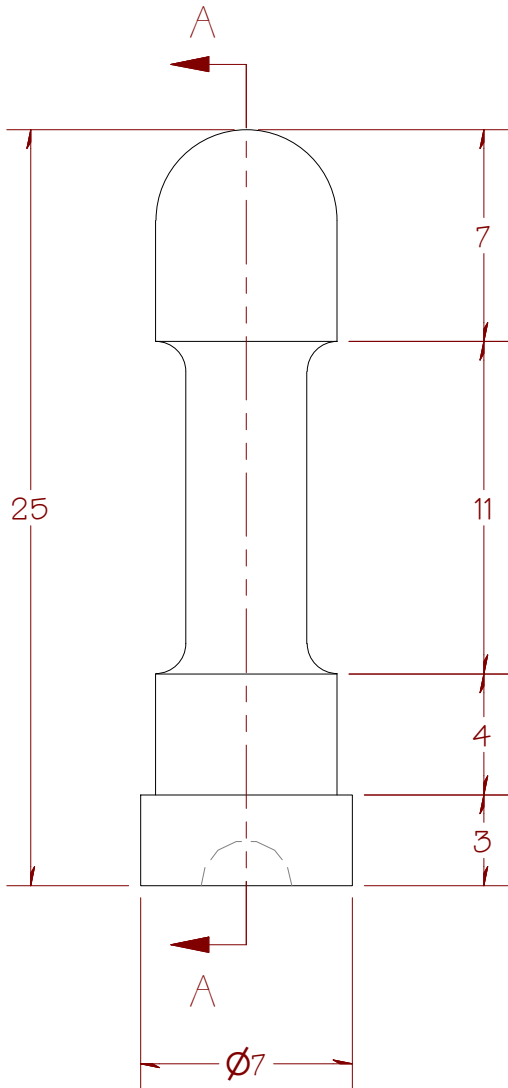
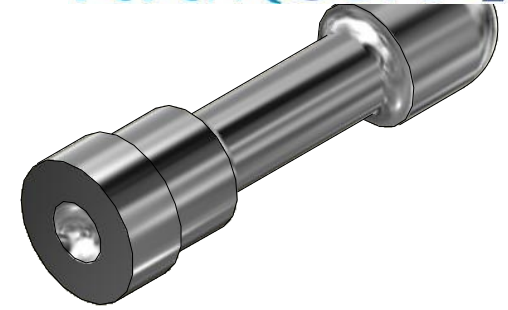


ALL DIMENSIONS ARE IN MILLIMETERS

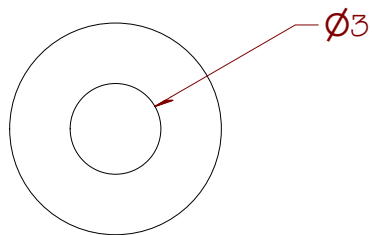


SHEET 3 OF 25

FROM THE DESK OF CURTIS WAGUESPACK	FILE NAME	Mount Bracket.ipt
	DESCRIPTION	Hardware, Bracket

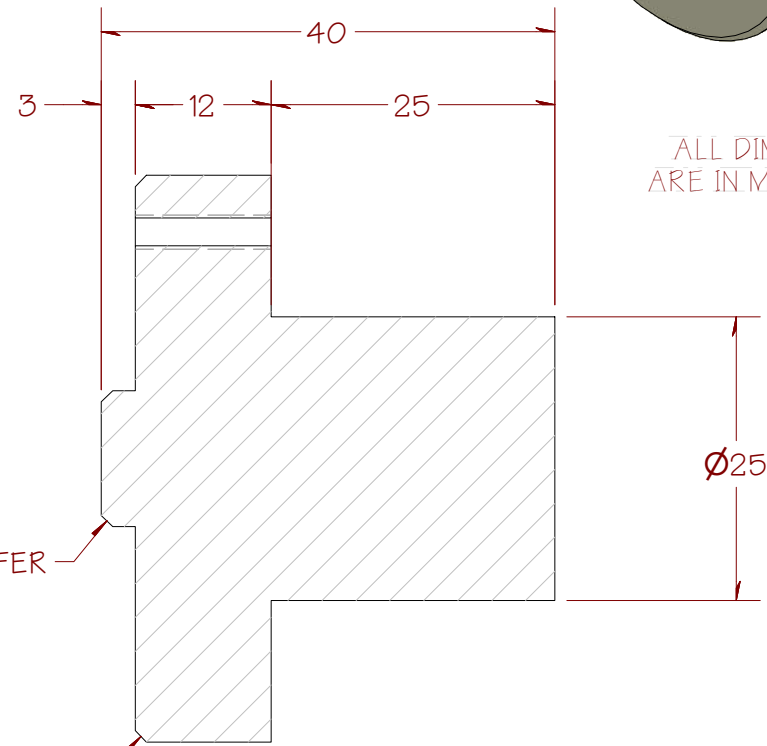
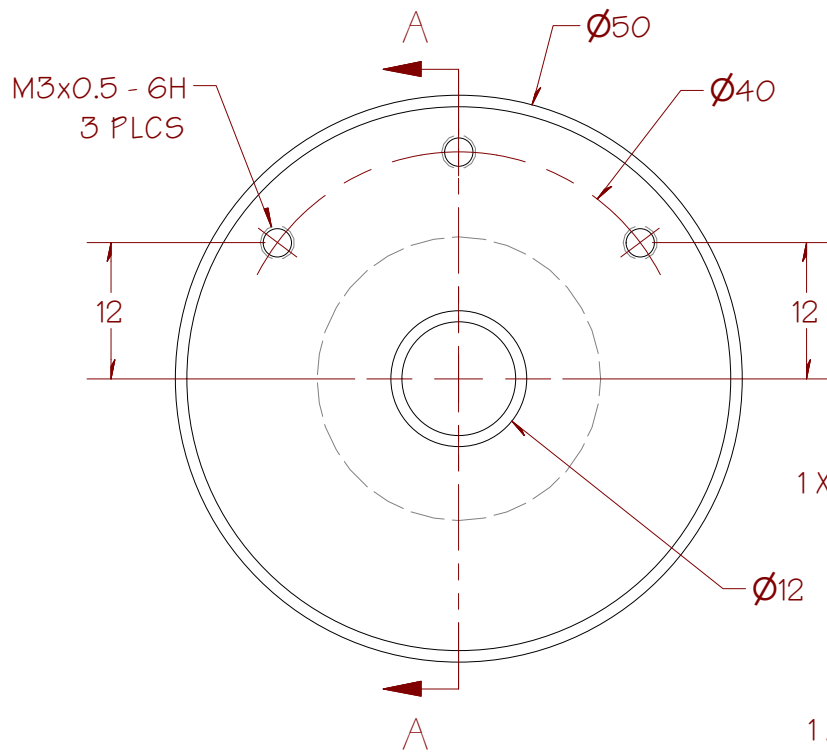
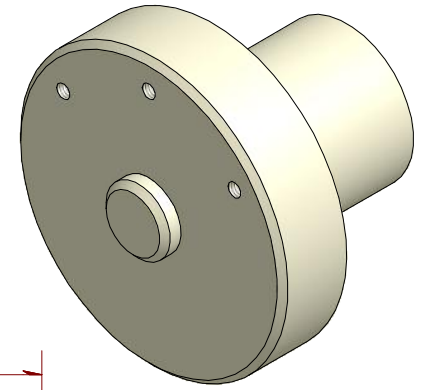


SECTION A-A



ALL DIMENSIONS
ARE IN MILLIMETERS

FROM THE DESK OF CURTIS WAGUESPACK	FILE NAME Valve Lifter.ipt
	DESCRIPTION Component, Lifter End

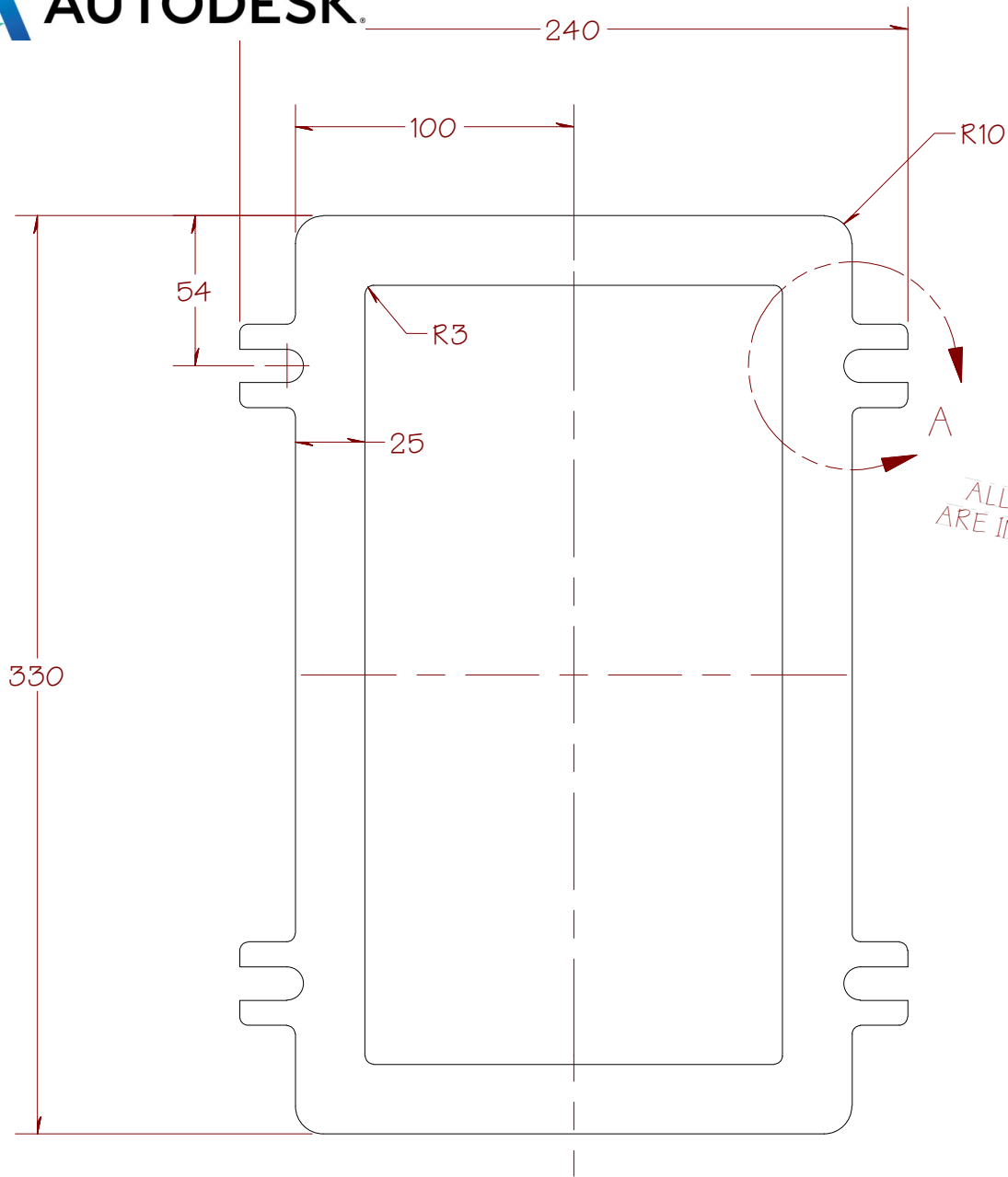


ALL DIMENSIONS ARE IN MILLIMETERS

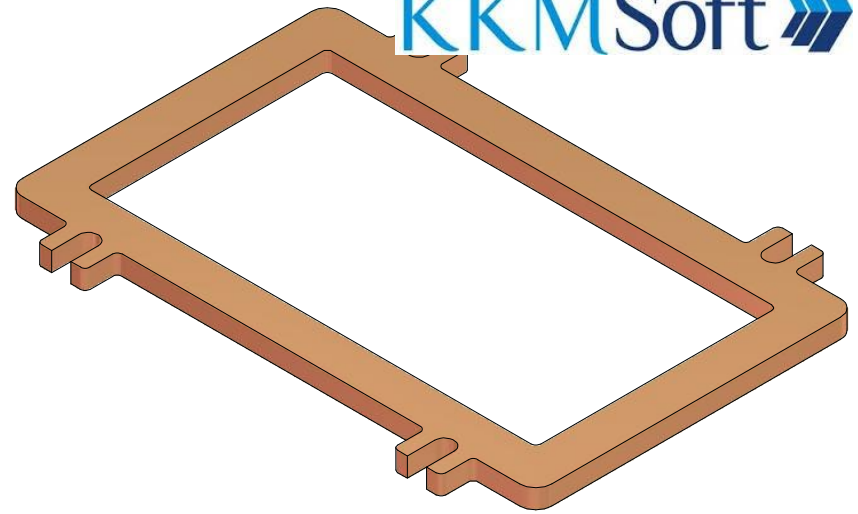
SECTION A-A

SHEET 5 OF 25

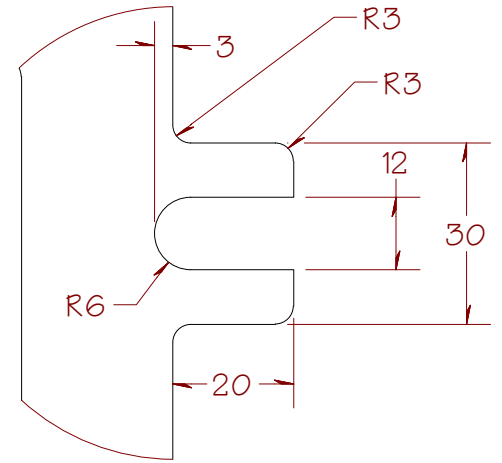
	FILE NAME Housing Fixture.ipt
	DESCRIPTION Machined, Housing Fixture Guide



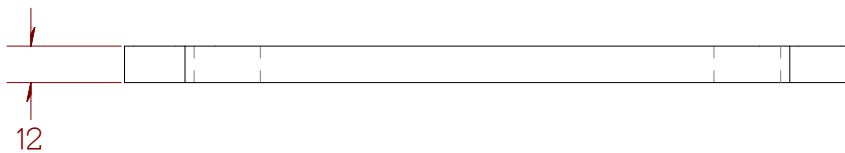
ALL DIMENSIONS ARE IN MILLIMETERS



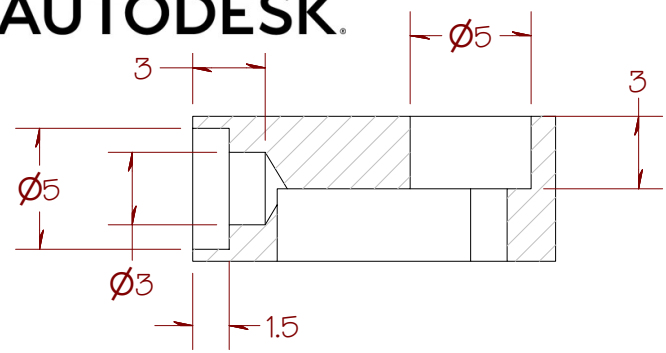
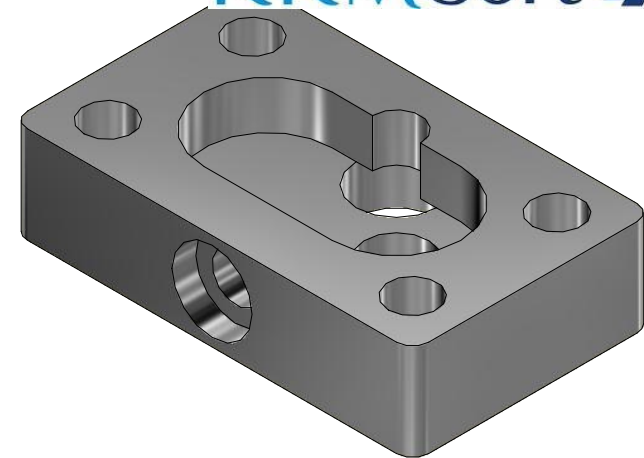
NOTCH DETAIL TYPICAL
4 PLCS



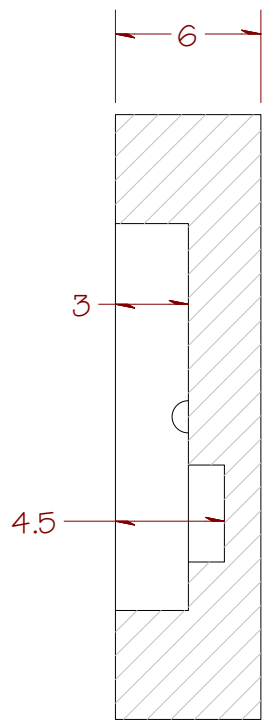
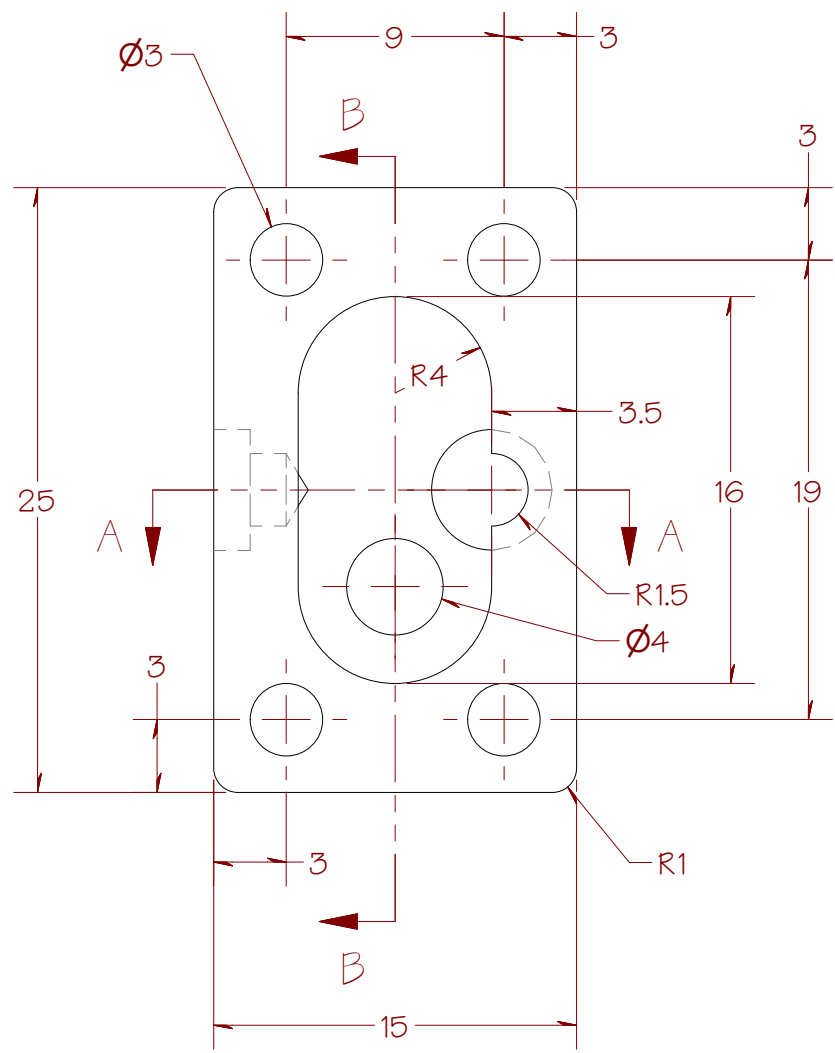
DETAIL A



FROM THE DESK OF CURTIS WAGUESPACK	FILE NAME	Hopper Flange.ipt
	DESCRIPTION	Laser Cut, Hopper Flange, Copper



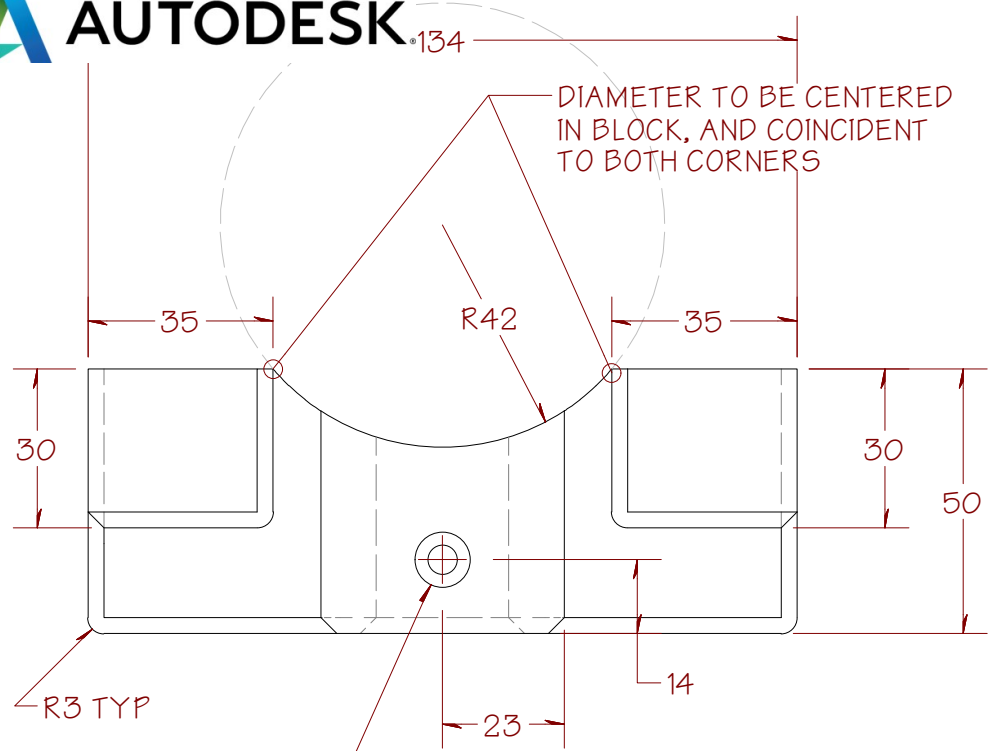
SECTION A-A



SECTION B-B

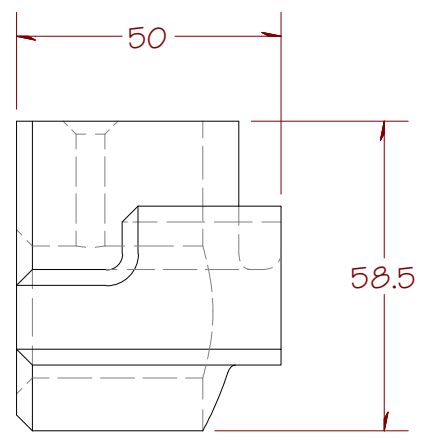
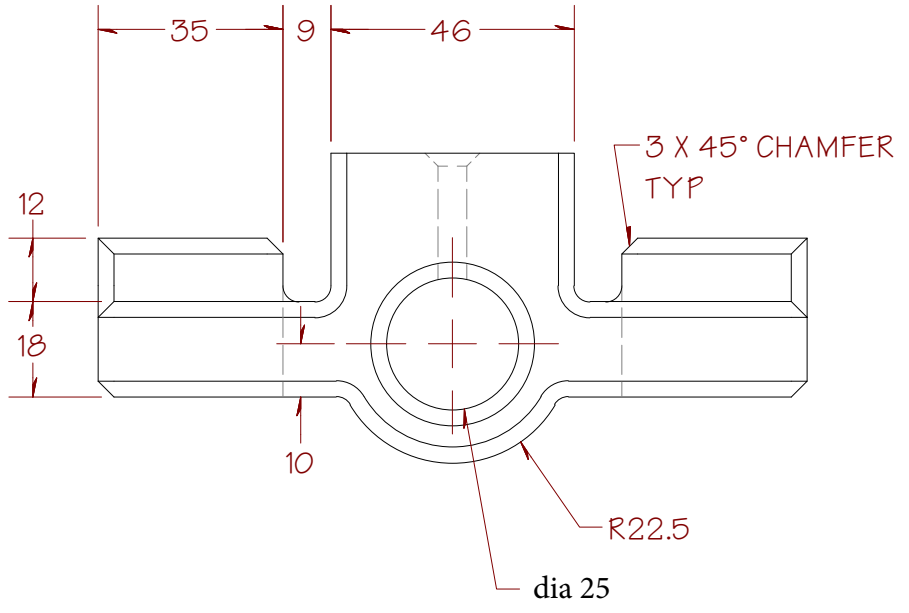
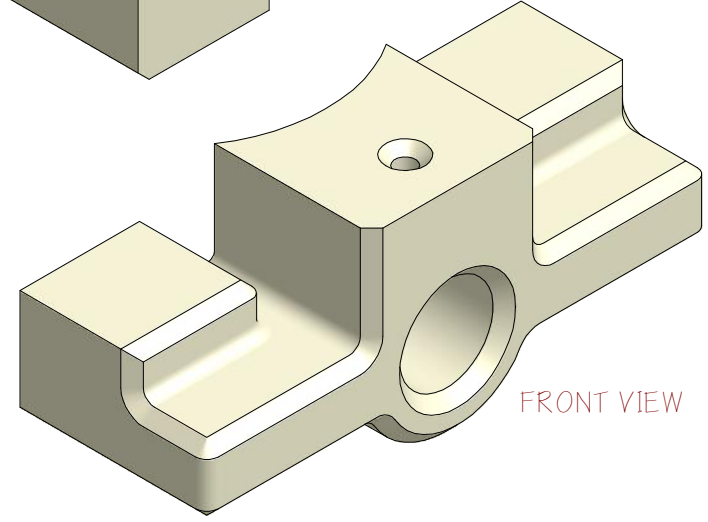
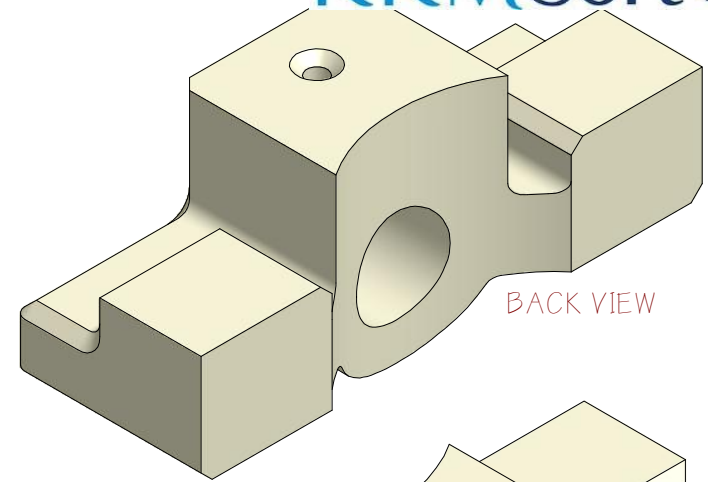
ALL DIMENSIONS
ARE IN MILLIMETERS

	FILE NAME Gear Pump Body.ipt
	DESCRIPTION Machined, Pump Base, K-02



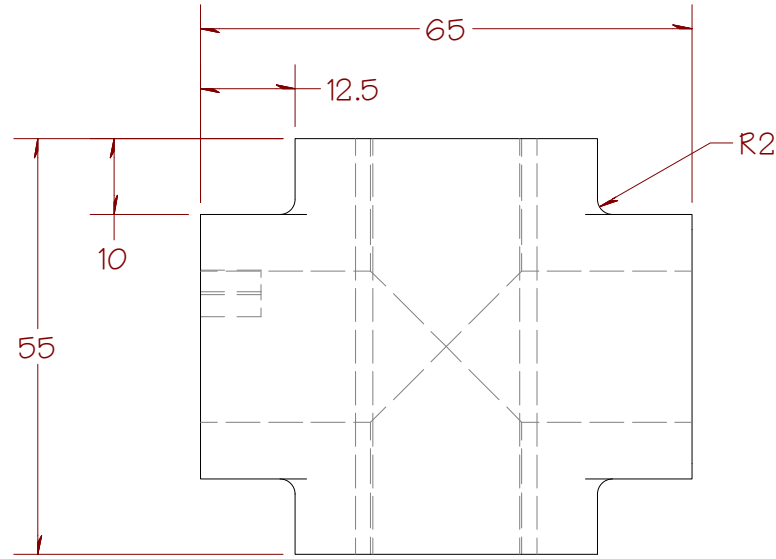
Ø5.5 ∇ 23.81
 ✓ Ø 10.4 X 90°

ALL DIMENSIONS ARE IN MILLIMETERS

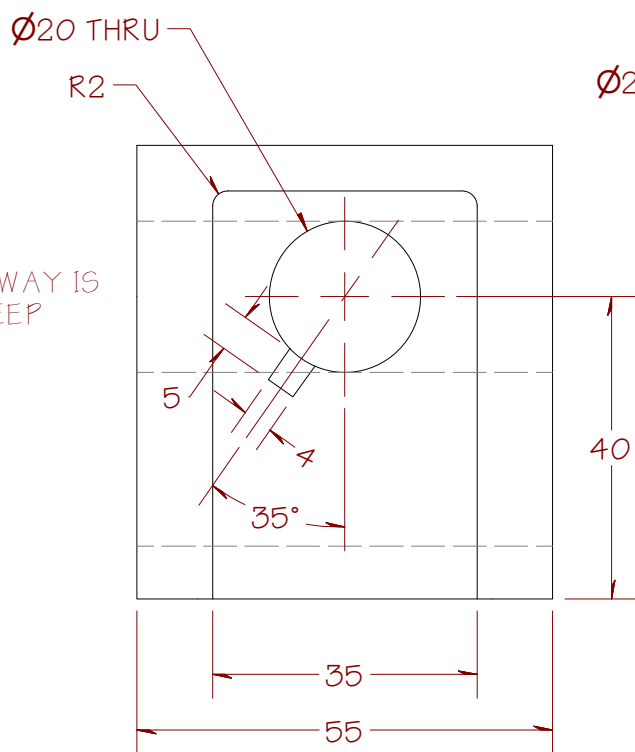


SHEET 8 OF 25

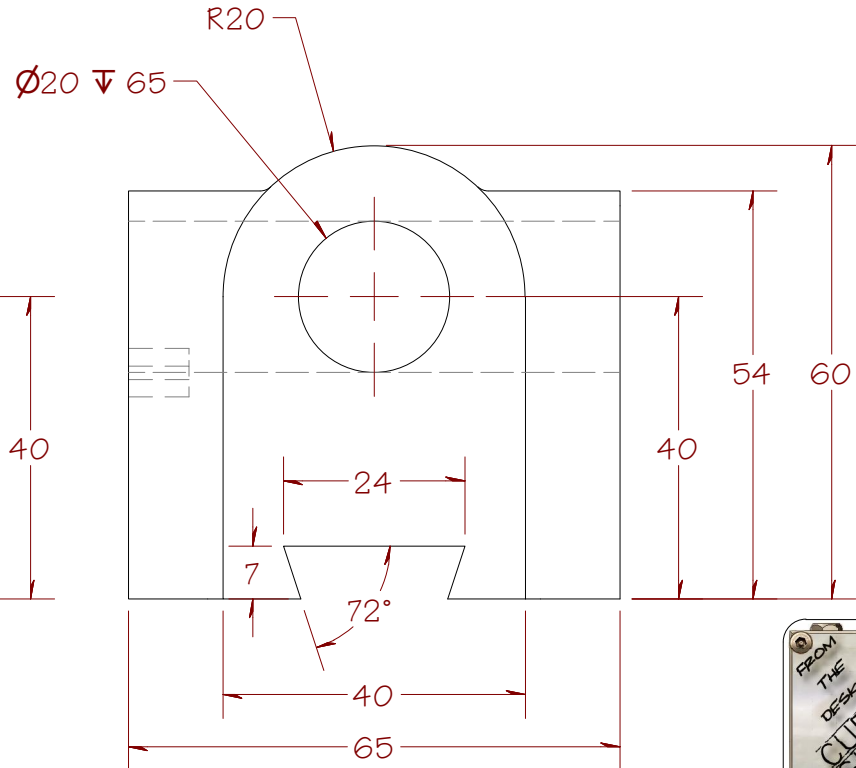
	FILE NAME	Alignment Bracket.ipt
	DESCRIPTION	Hardware, Bracket, R10



ALL DIMENSIONS ARE IN MILLIMETERS

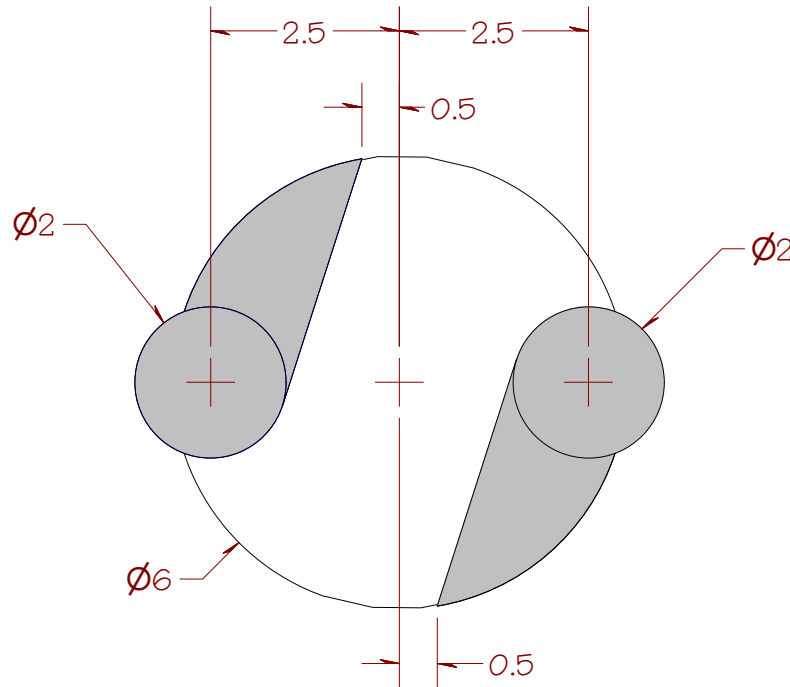
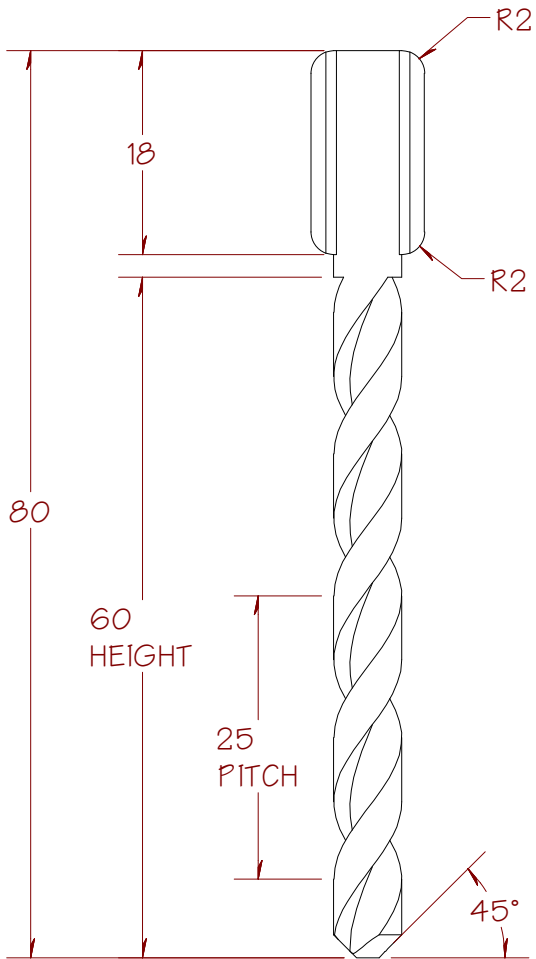
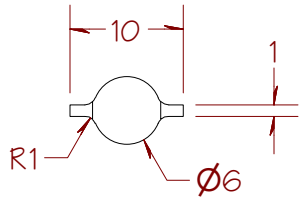


KEYWAY IS 8 DEEP



SHEET 10 OF 25

	FILE NAME Anchor Slide.ipt
	DESCRIPTION Hardware, Anchor Slide, HM-T



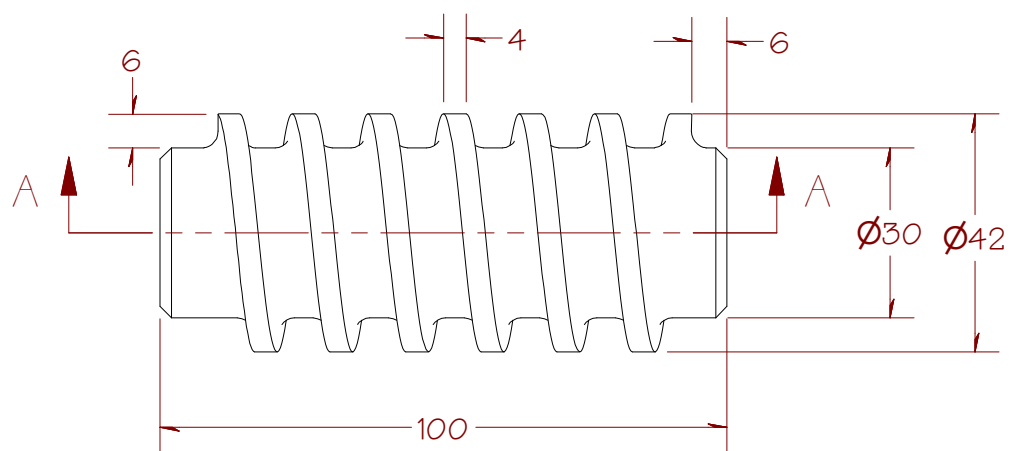
END VIEW WITH CUT PROFILES (SHOWN SHADED)

ALL DIMENSIONS ARE IN MILLIMETERS

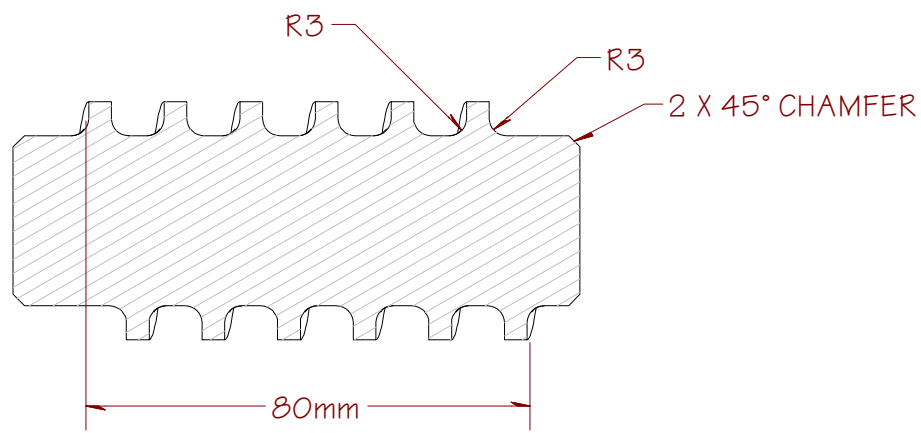
HINT:
CREATE A COIL CUT AND THEN PATTERN THE CUT AROUND THE AXIS

SHEET 11 OF 25

FROM THE DESK OF CURTIS WAGUESPACK	FILE NAME Drill Bit.ipt
	DESCRIPTION Hardware, Splined Drill Bit



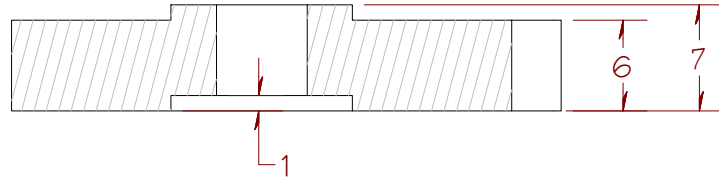
ALL DIMENSIONS ARE IN MILLIMETERS



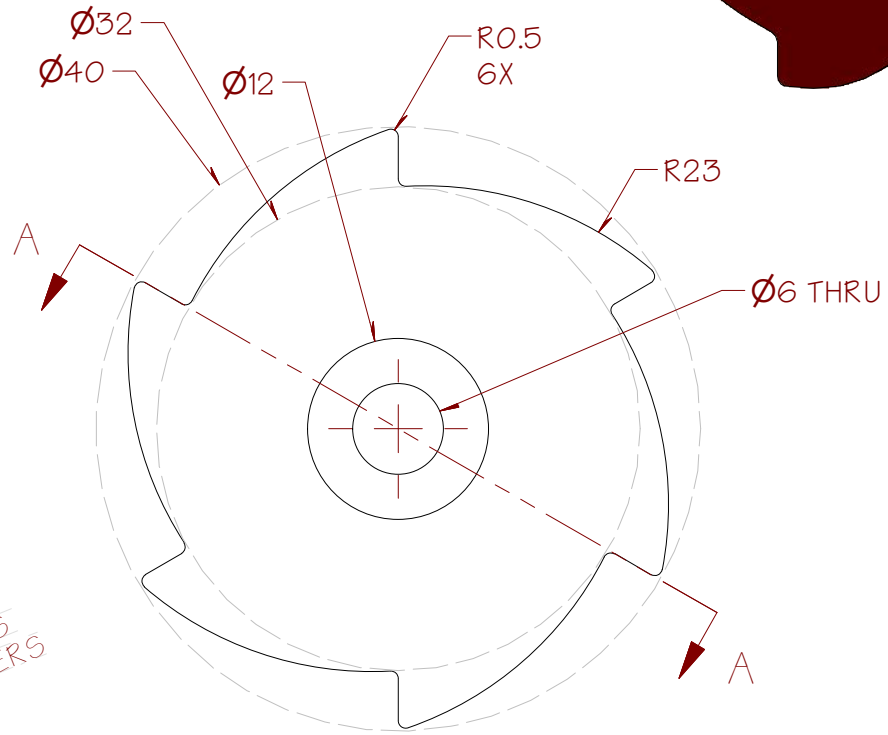
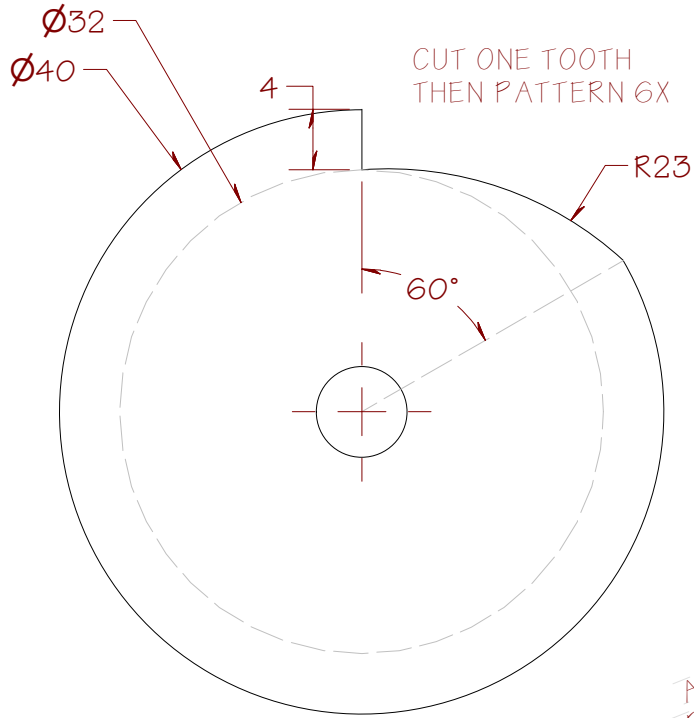
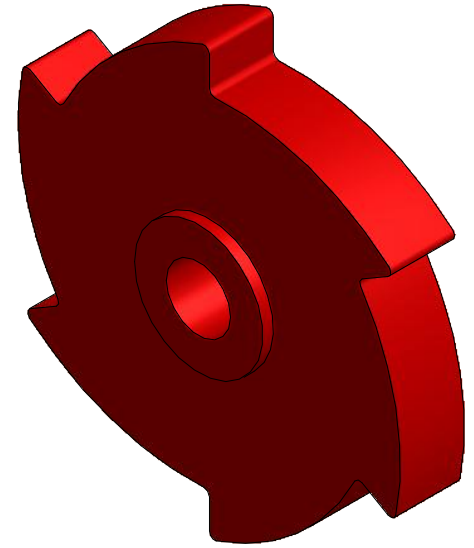
COIL 6 REVOLUTIONS AT 80 mm

SECTION A-A

FROM THE DESK OF CURTIS WAGUESPACK	FILE NAME	Drive Insert.ipt
	DESCRIPTION	Hardware, Drive Insert, GH-076



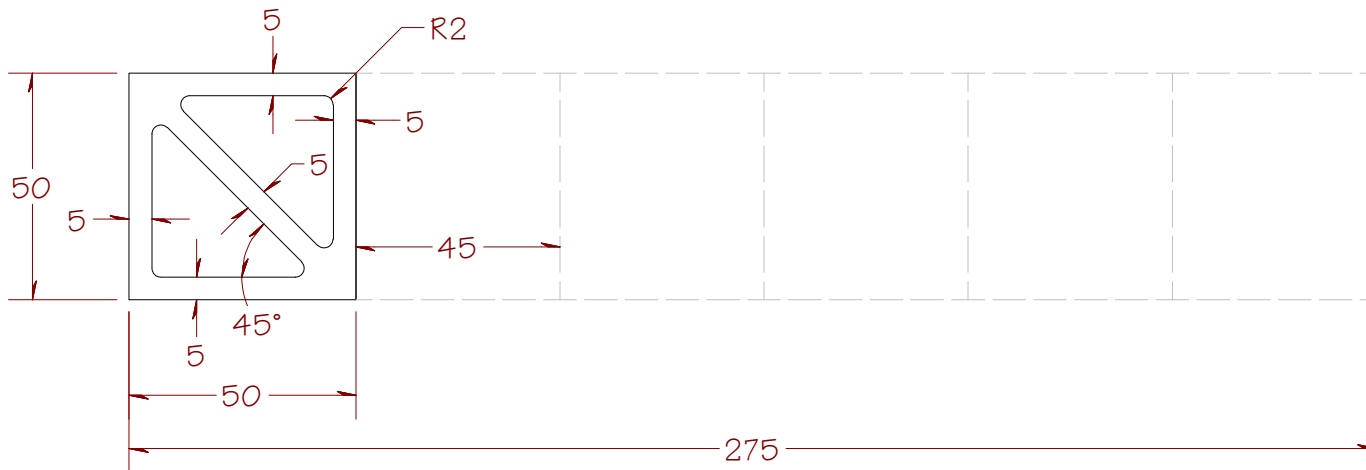
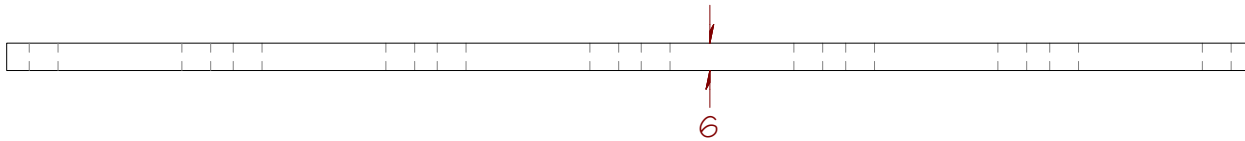
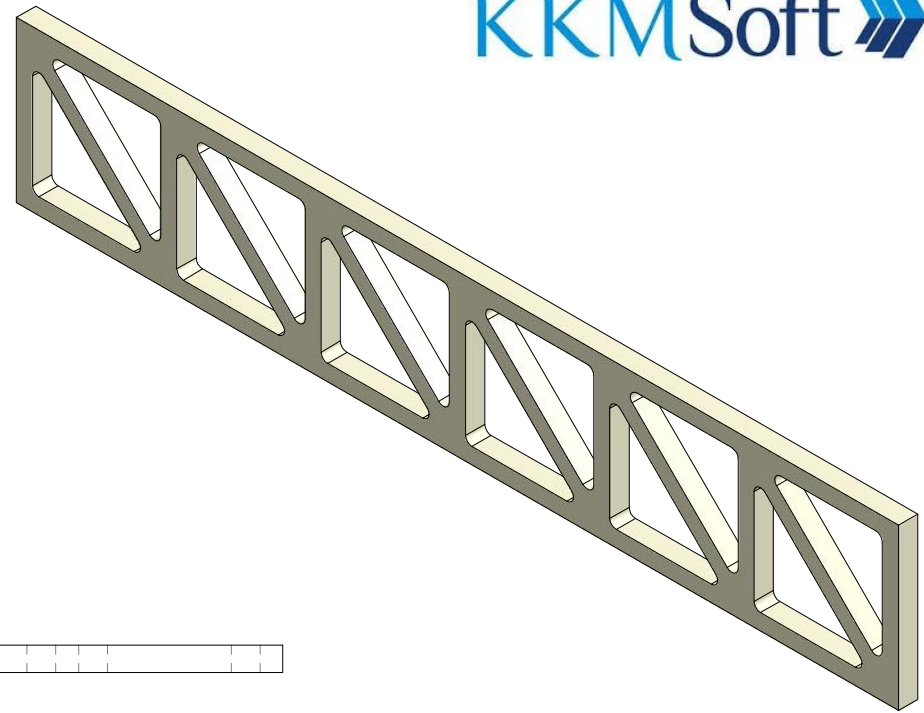
SECTION A-A



ALL DIMENSIONS ARE IN MILLIMETERS

FROM THE DESK OF CURTIS WAGUESPACK	FILE NAME	Ratchet Wheel.ipt
	DESCRIPTION	Hardware, Ratchet Wheel, 6 Tooth

ALL DIMENSIONS ARE IN MILLIMETERS

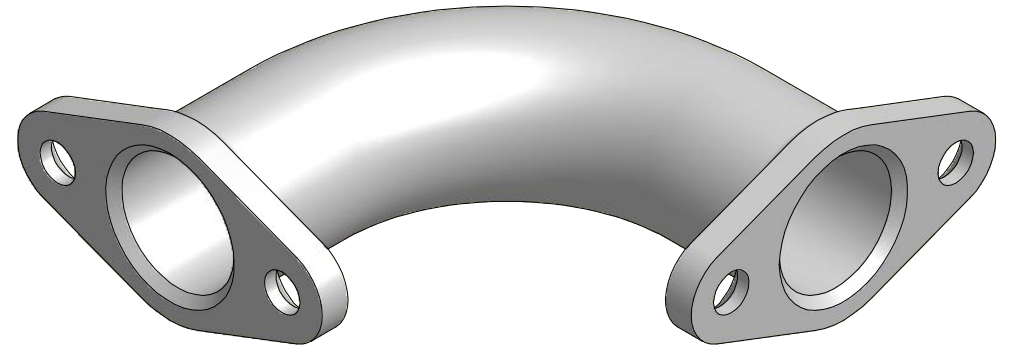
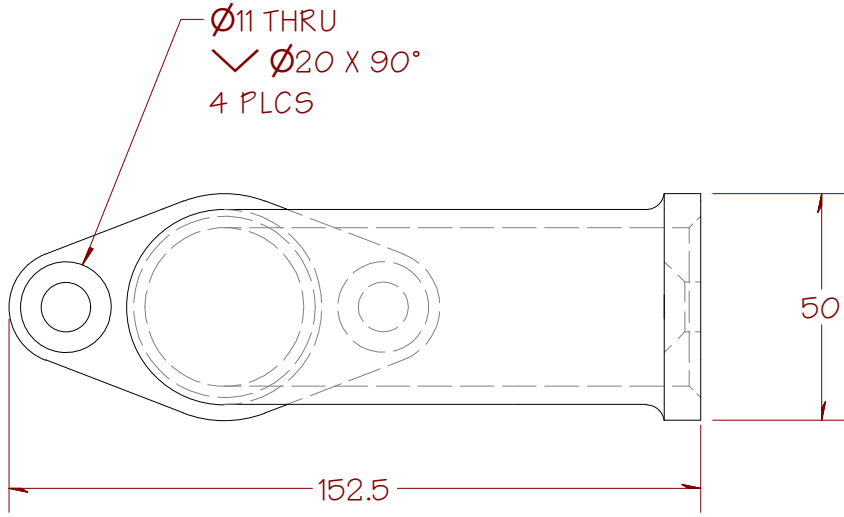


CREATE ONE UNIT AS SHOWN
THEN PATTERN 6X

SHEET 14 OF 25

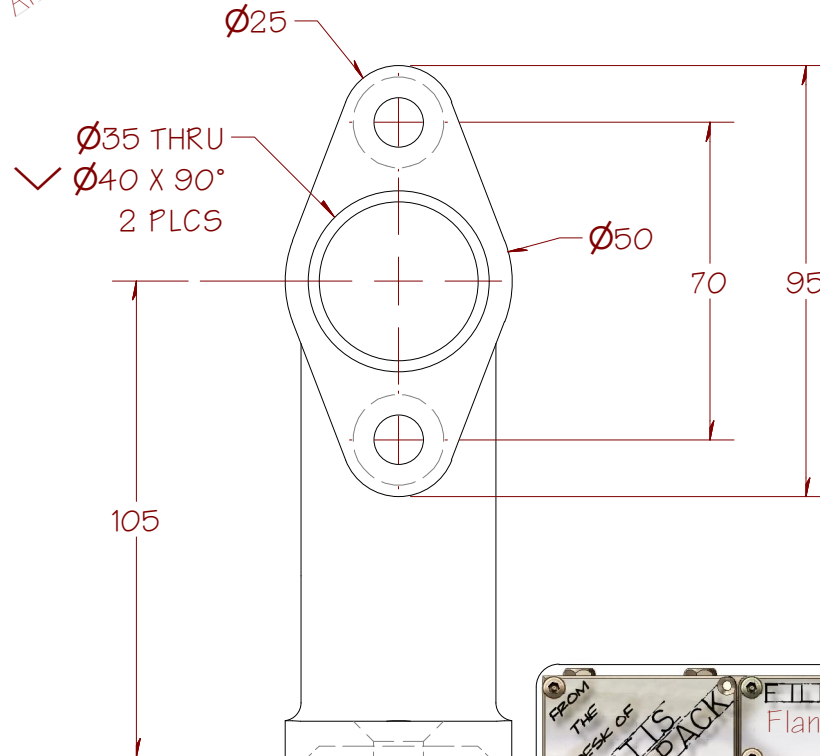
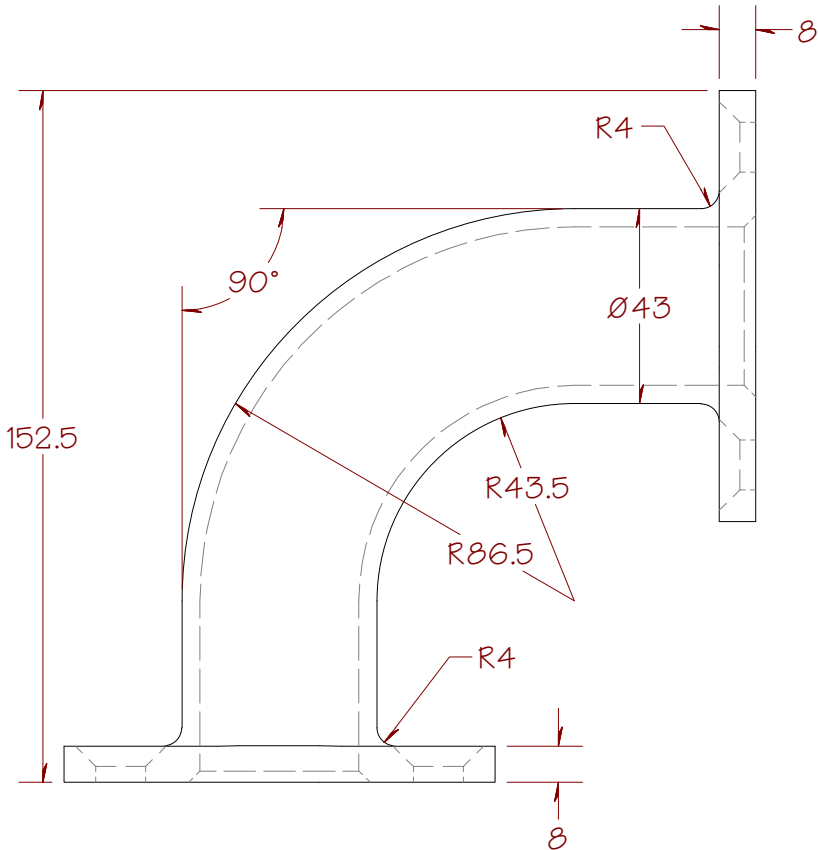
FROM THE DESK OF CURTIS WAGUESPACK

FILE NAME	Truss Flange.ipt
DESCRIPTION	Component, Truss Flange, ABS



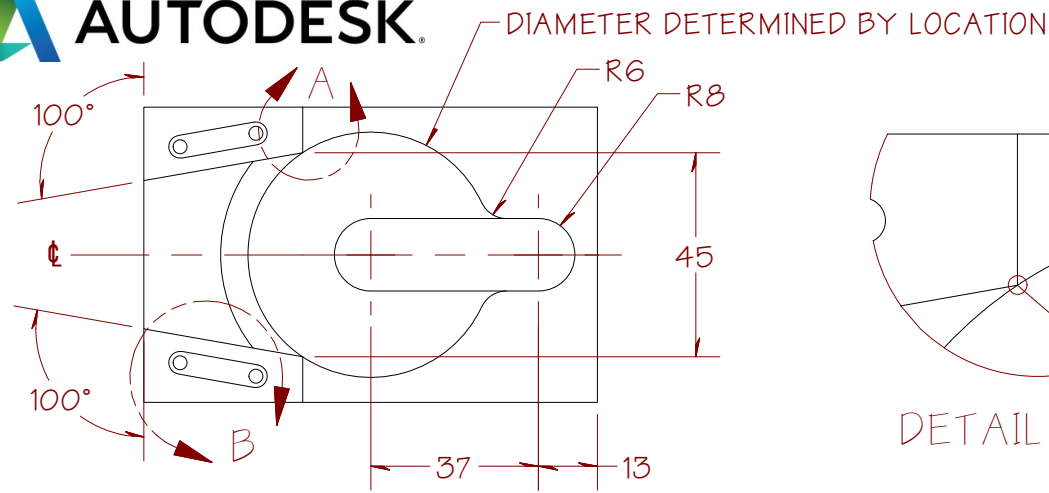
HINT: CREATE ONE HALF AND THEN MIRROR IT

ALL DIMENSIONS ARE IN MILLIMETERS

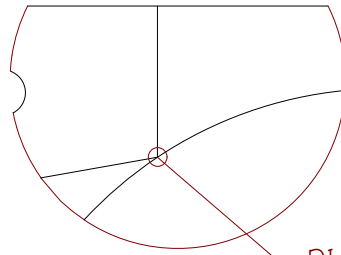


SHEET 15 OF 25

FROM THE DESK OF CURTIS WAGUESPACK	FILE NAME Flanged 90 Elbow.ipt
	DESCRIPTION Hardware, Flanged Elbow, 90 degrees

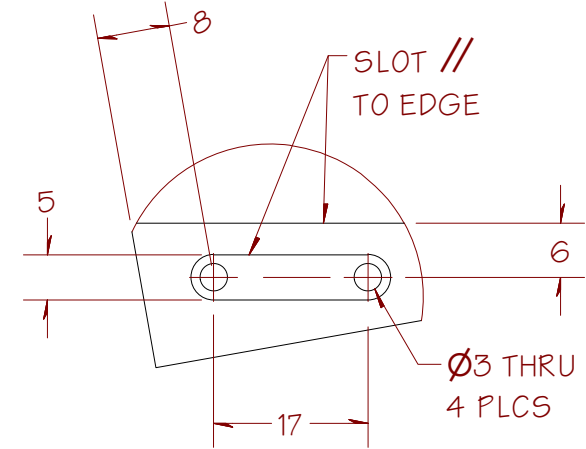
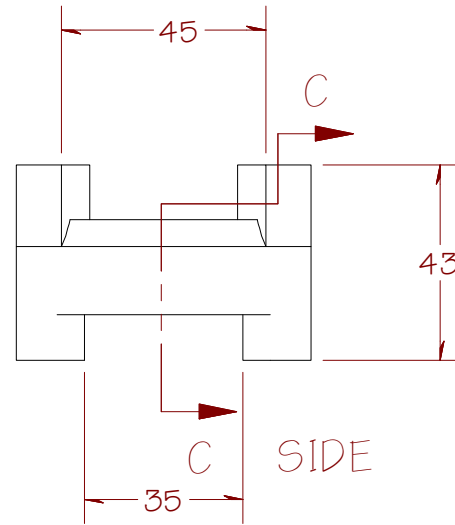
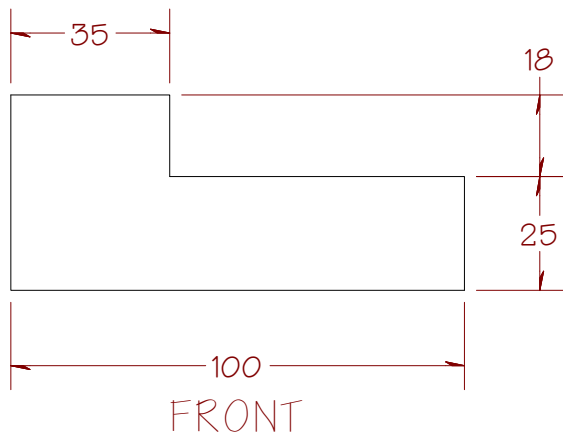
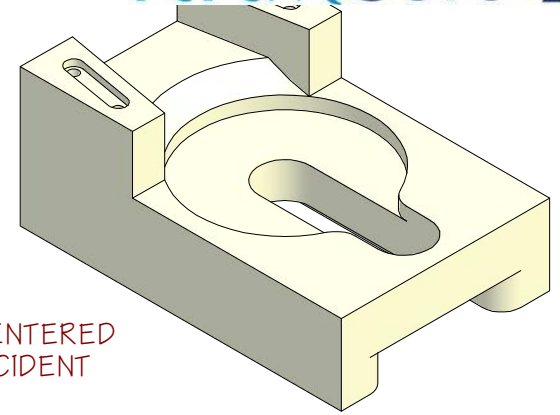


TOP

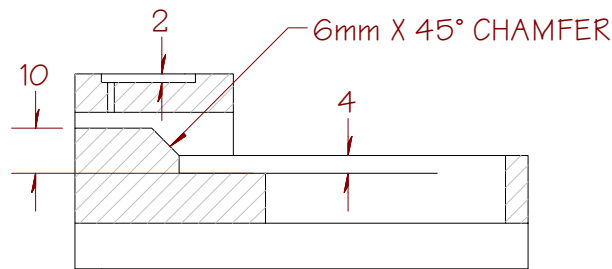
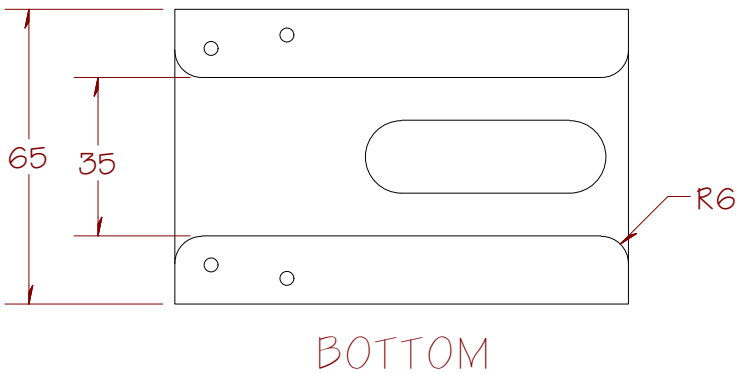


DETAIL A

DIAMETER TO BE CENTERED IN BLOCK, AND COINCIDENT TO BOTH CORNERS



DETAIL B

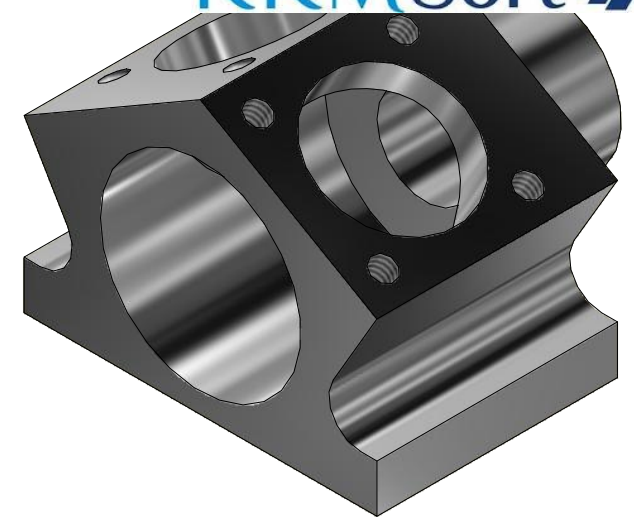
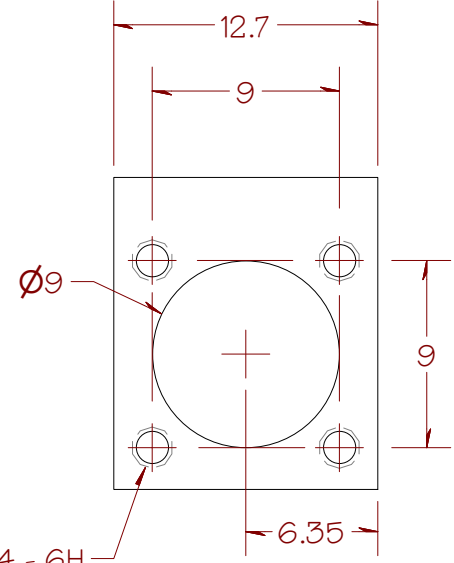
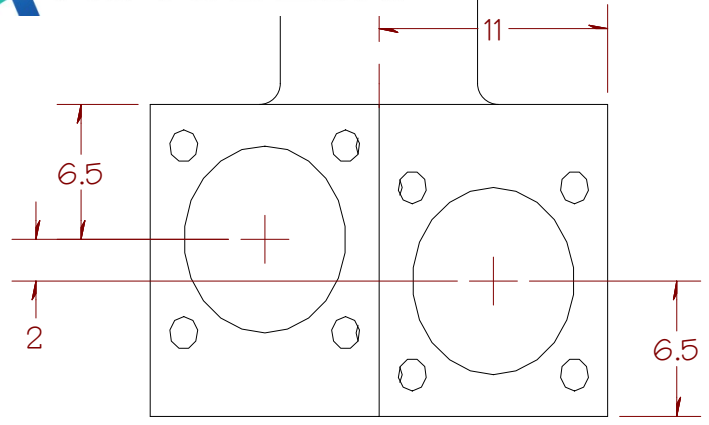


SECTION C-C

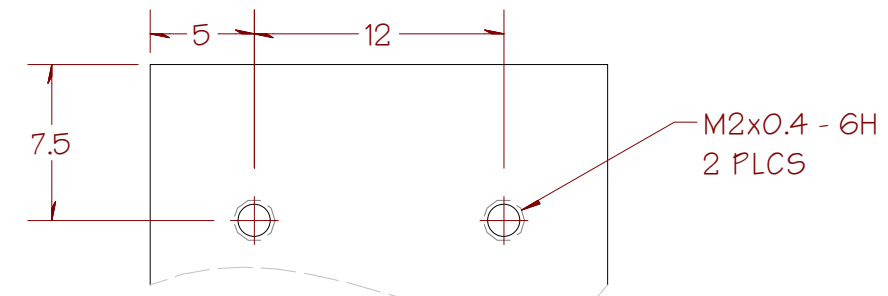
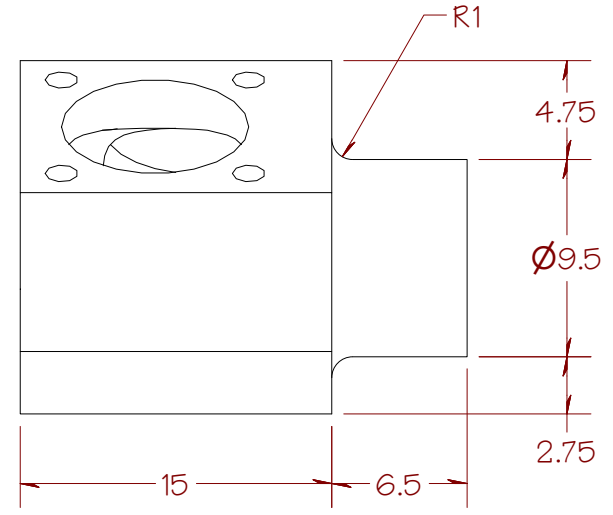
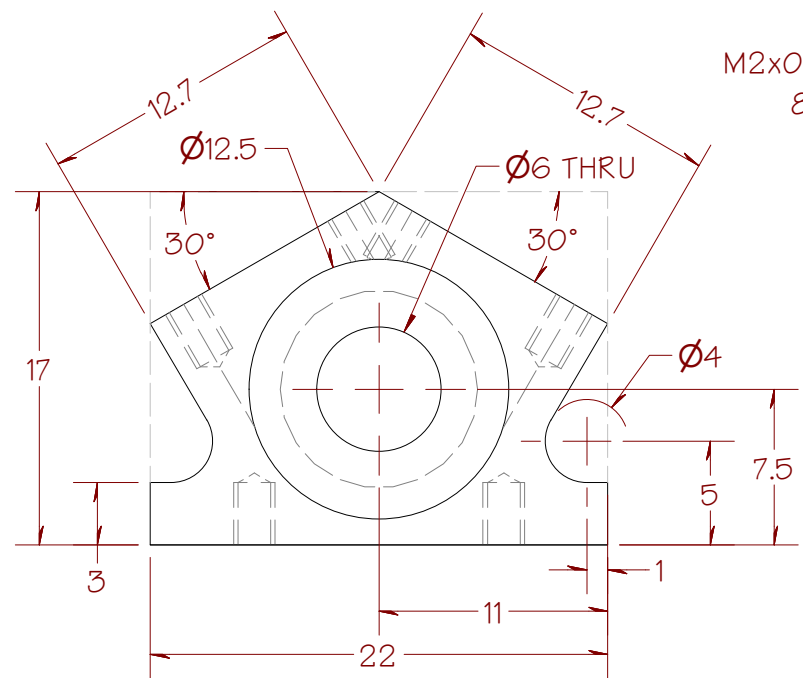
ALL DIMENSIONS ARE IN MILLIMETERS

SHEET 16 OF 25

FROM THE DESK OF CURTIS WAGUESPACK	FILE NAME	Alignment Catch.ipt
	DESCRIPTION	Fixture, Alignment Catch Block Slide



M2x0.4 - 6H
8 PLCS

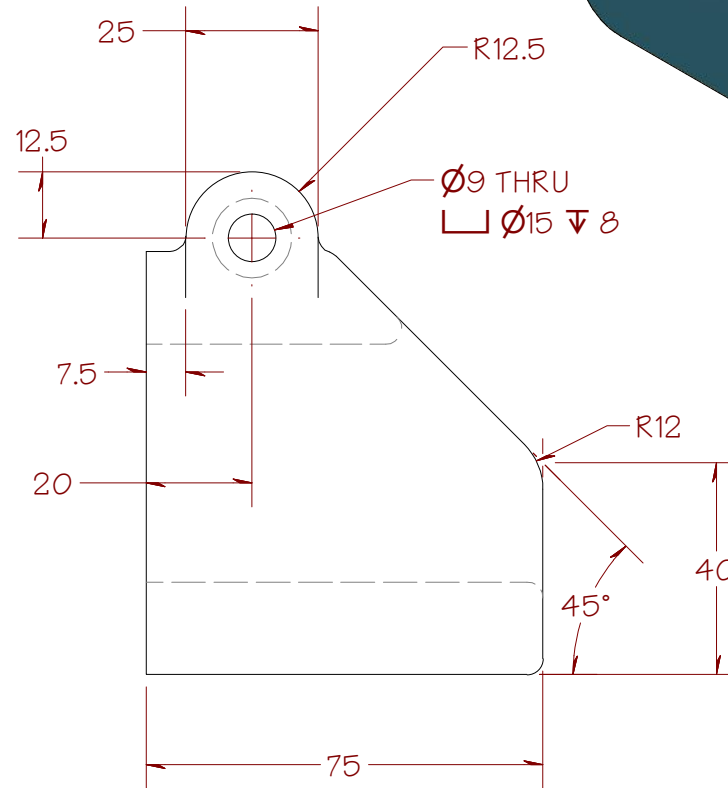
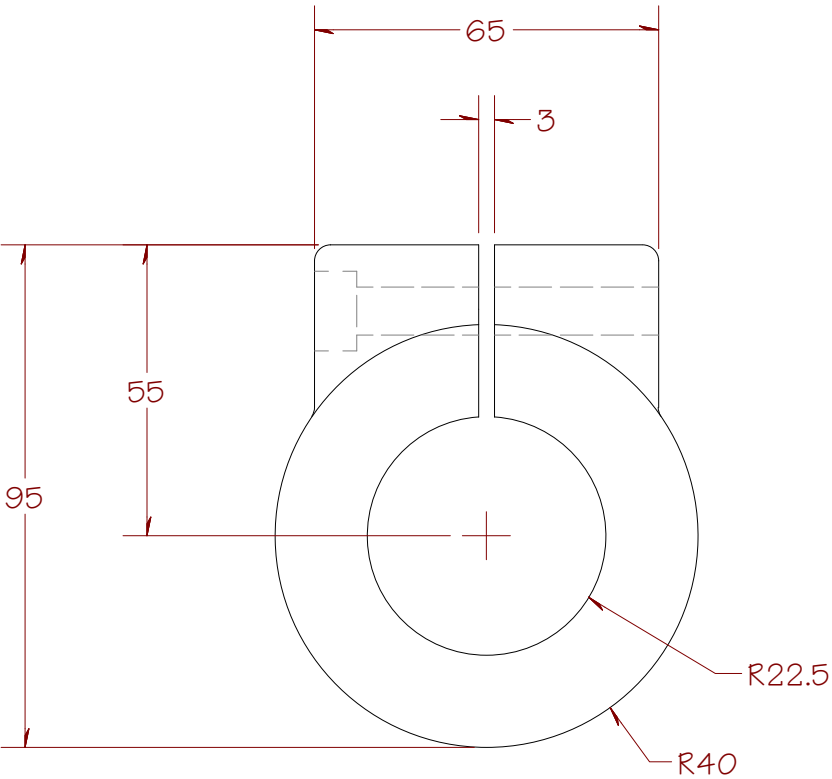
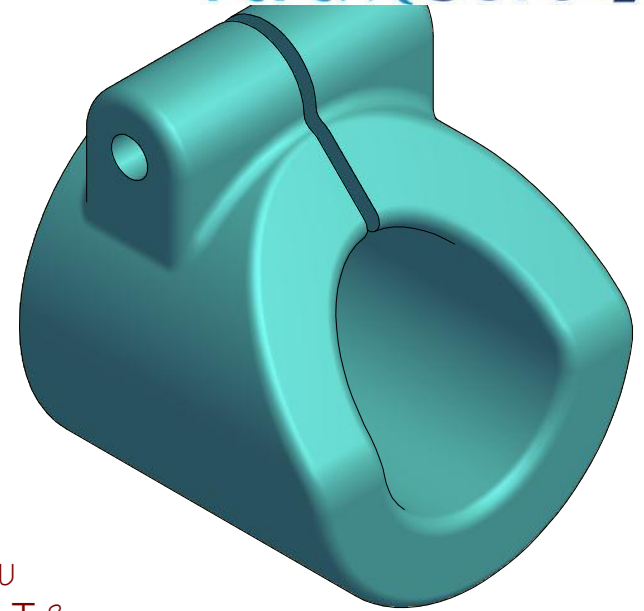


BOTTOM VIEW

HINT: START WITH A 17x22x15 BLOCK
THEN CUT FEATURES AS
IF MACHINING IN THE REAL WORLD

ALL DIMENSIONS
ARE IN MILLIMETERS

FROM THE DESK OF CURTIS WAGUESPACK	FILE NAME	Mini Crank Case.ipt
	DESCRIPTION	Concept Model, Miniature V-Twin, Crank Case

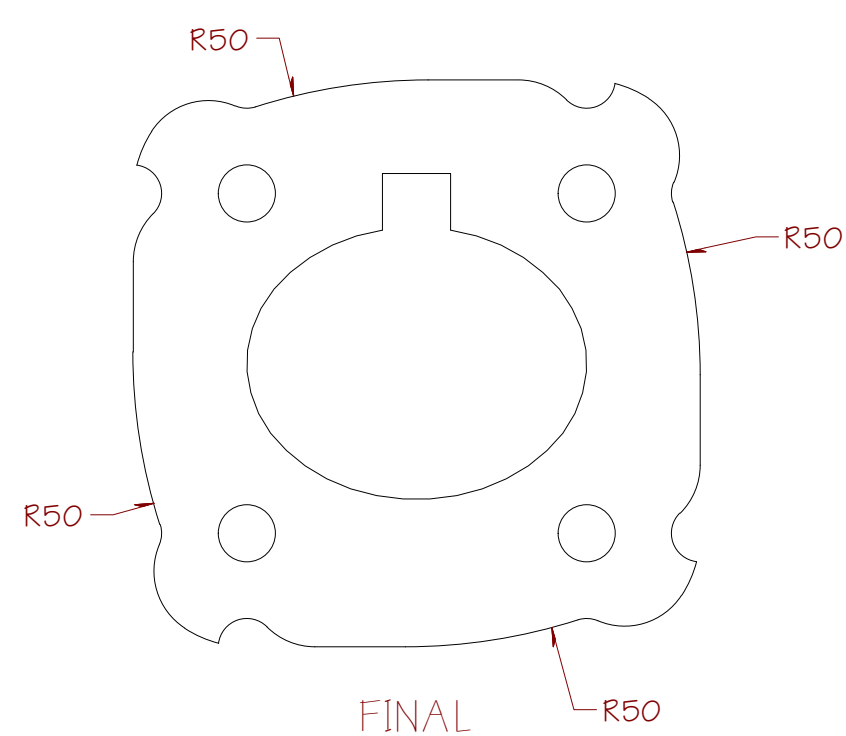
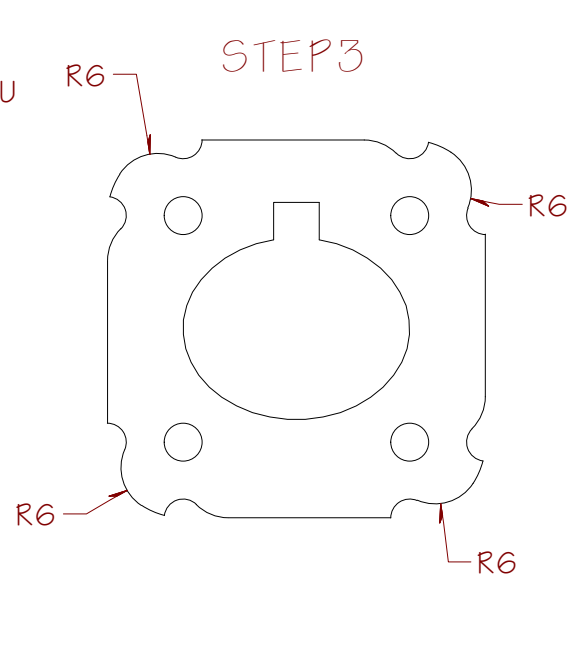
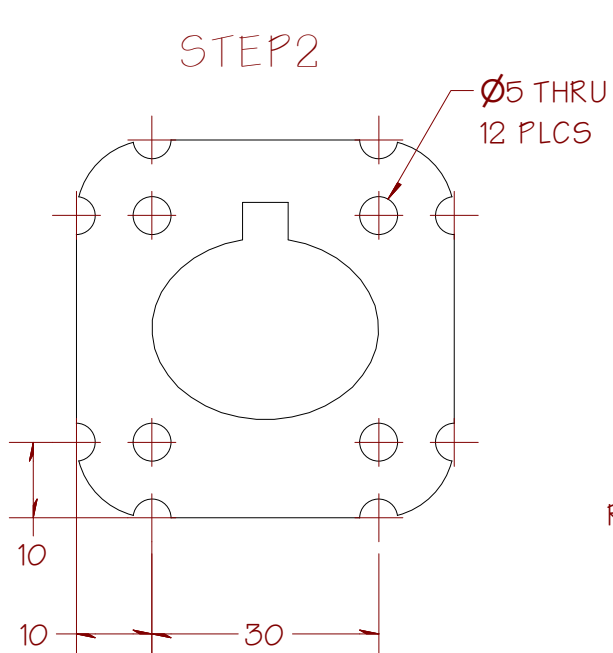
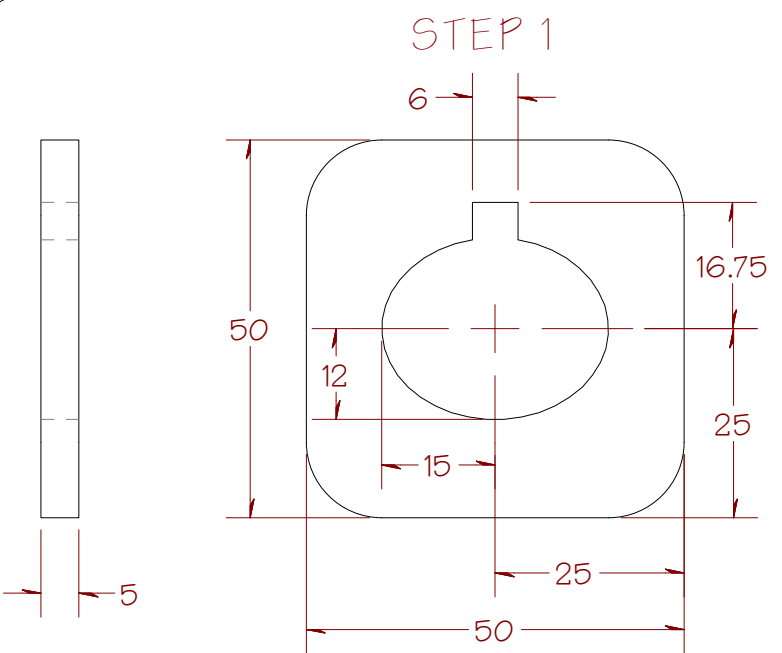


ALL DIMENSIONS
ARE IN MILLIMETERS

ALL FILLETS 3mm
UNLESS OTHERWISE
NOTED

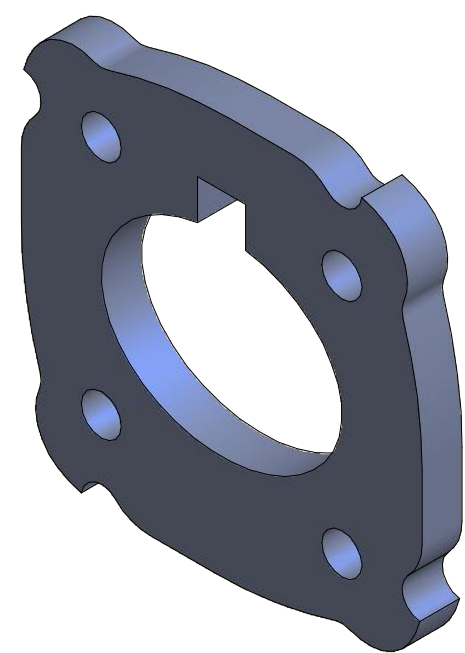
SHEET 18 OF 25

FROM THE DESK OF CURTIS WAGUESPACK	FILE NAME	Pinch Fit Cap.ipt
	DESCRIPTION	Hardware, Pinch Fit Sleeve/Cap



HINT: START SIMPLE AND ADD FEATURES IN MULTIPLE STEPS.

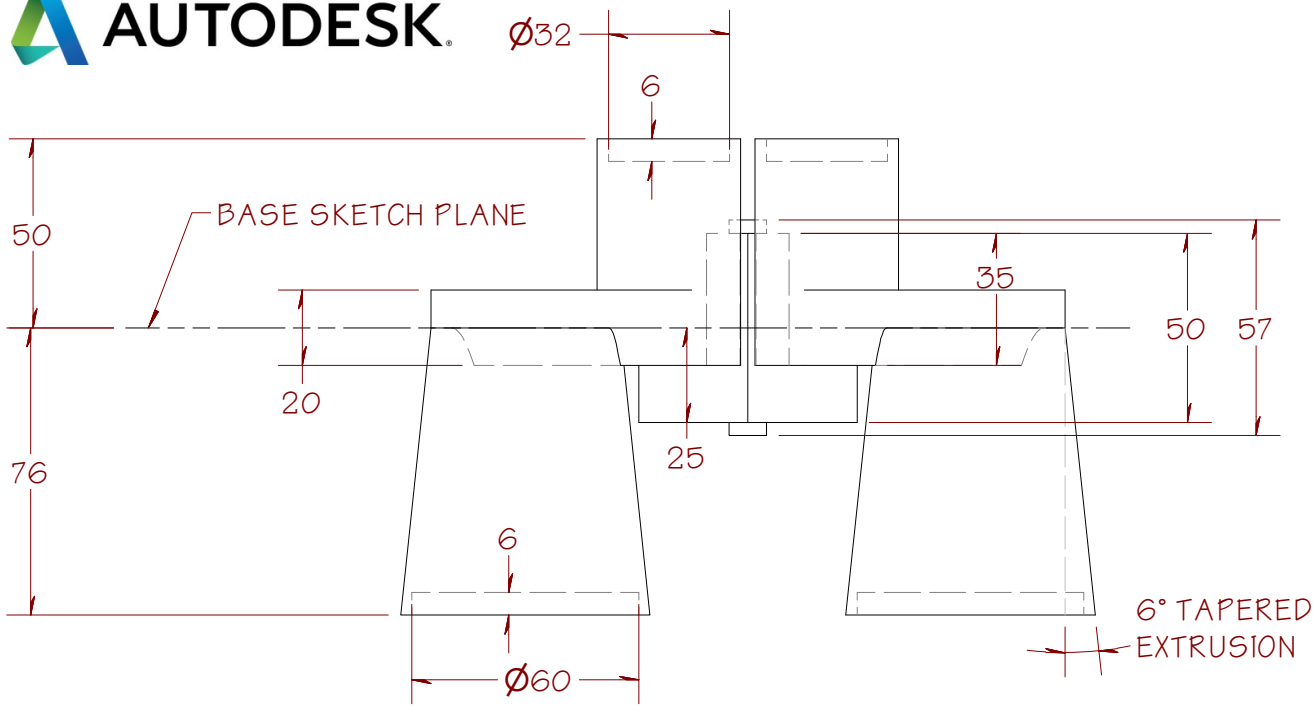
STEP 1, WOULD ACTUALLY BE STEP 3 OR 4 IF YOU STARTED WITH A RECTANGLE, THEN ADDED THE ELLIPSE, THEN ADDED THE KEY CUT, AND THEN ADDED THE FILLETS TO THE CORNERS.



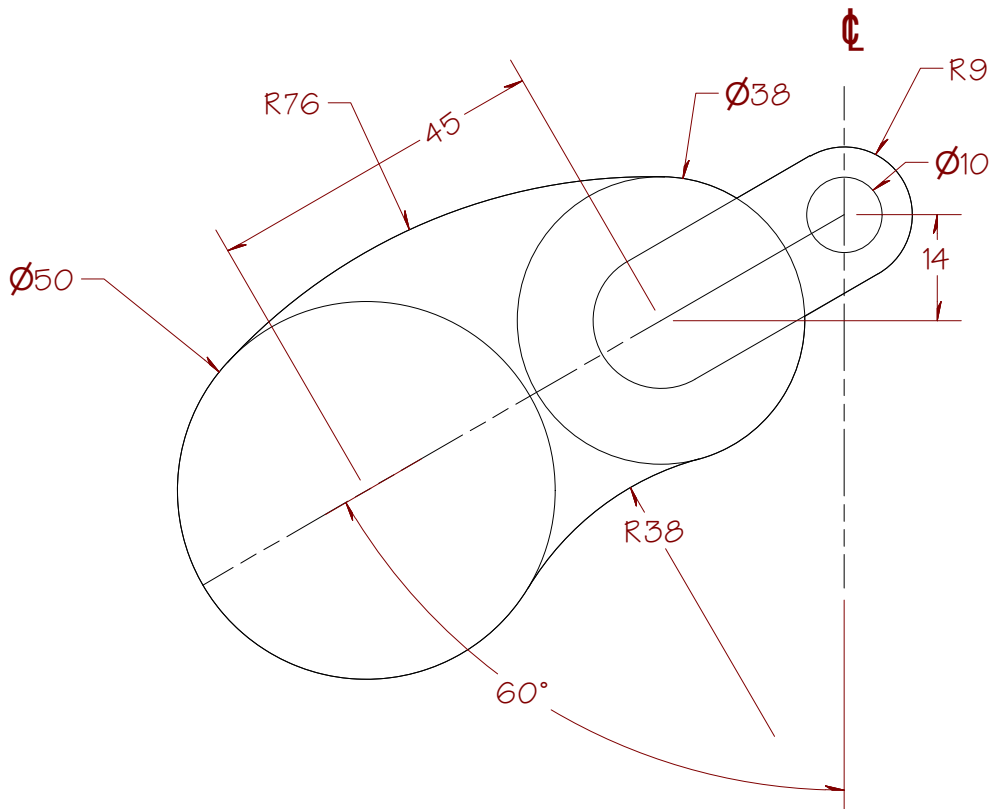
SHEET 19 OF 25

FROM THE DESK OF CURTIS WAGUESPACK

FILE NAME	Slip Nut Insert-03.ipt
DESCRIPTION	Hardware, Insert, Slip Nut, DI-5



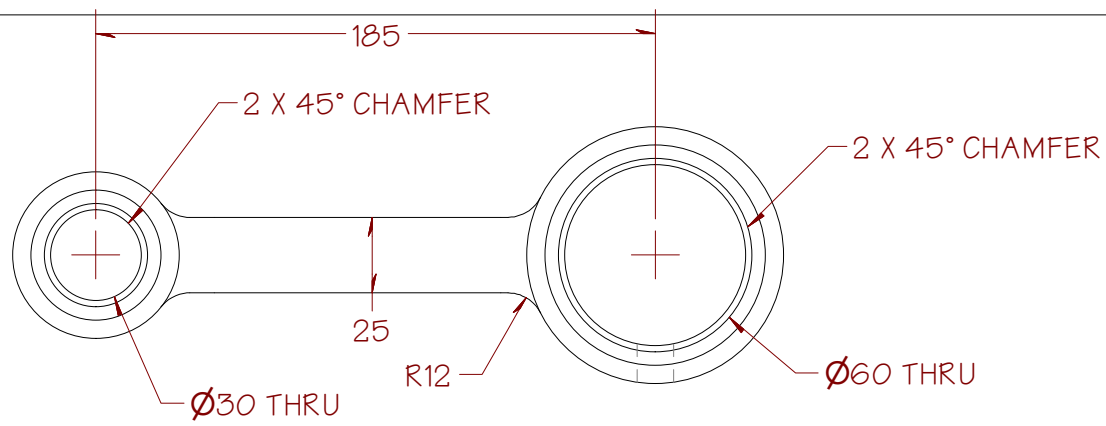
ALL DIMENSIONS ARE IN MILLIMETERS



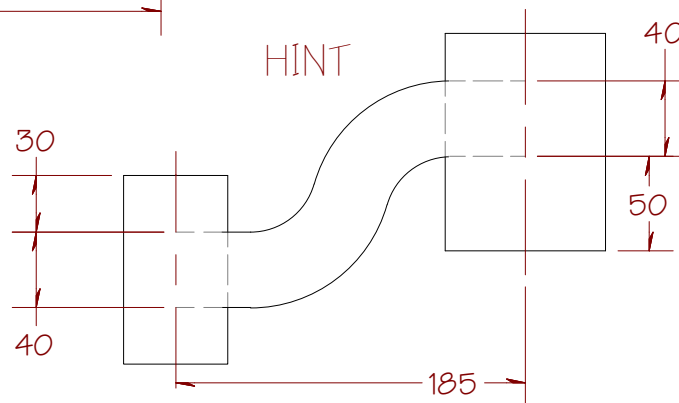
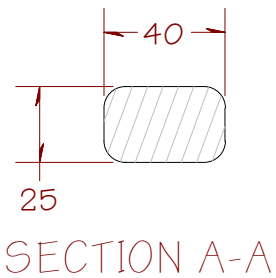
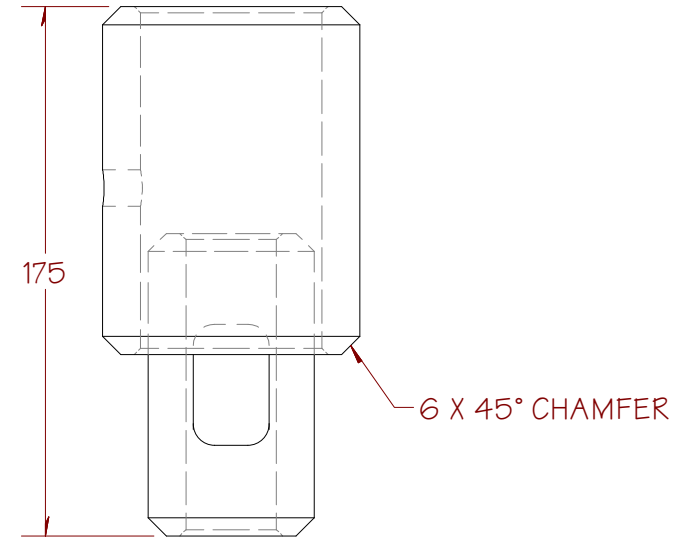
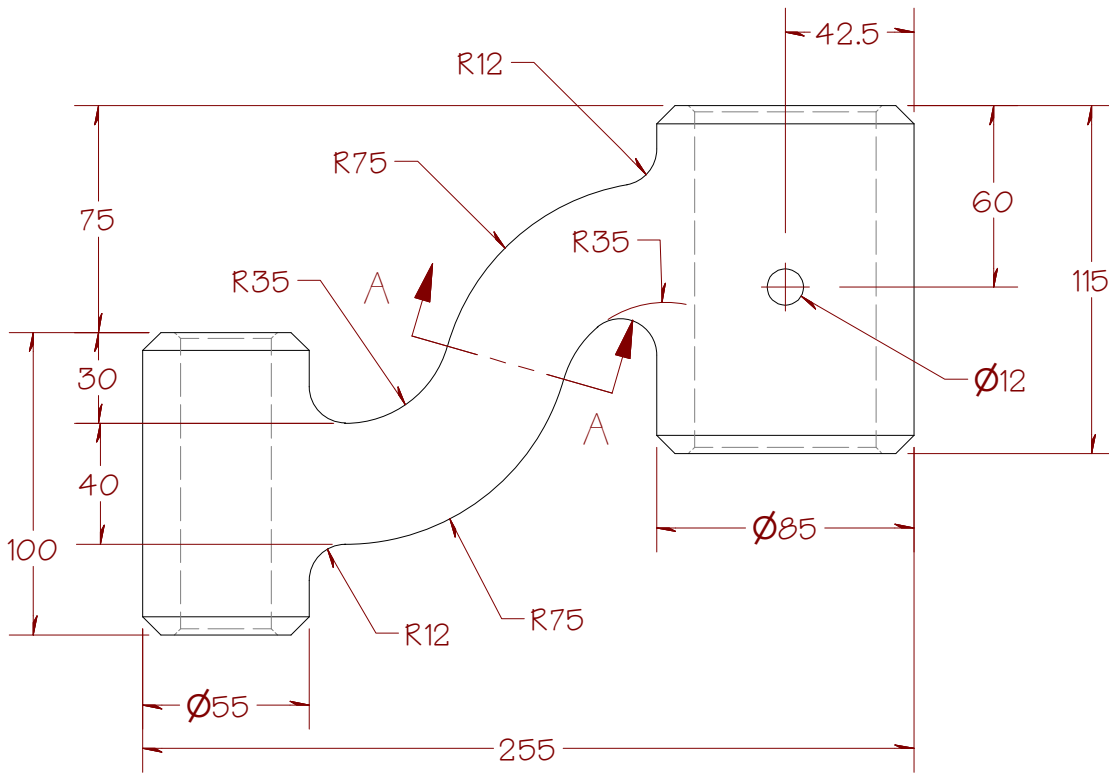
CREATE THIS BASE SKETCH AND THEN CREATE THE BINOCULARS BY SHARING THE SKETCH AND EXTRUDING THE VARIOUS PARTS OF THE BINOCULARS AS SEPERATE FEATURES. THEN MIRROR TO COMPLETE.

SHEET 20 OF 25

FROM THE DESK OF CURTIS WAGUESPACK	FILE NAME Field Glass Fun.ipt
	DESCRIPTION Bino Challenge

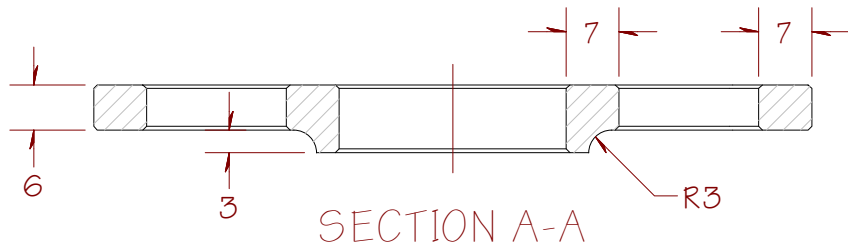


ALL DIMENSIONS
ARE IN MILLIMETERS

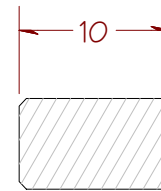
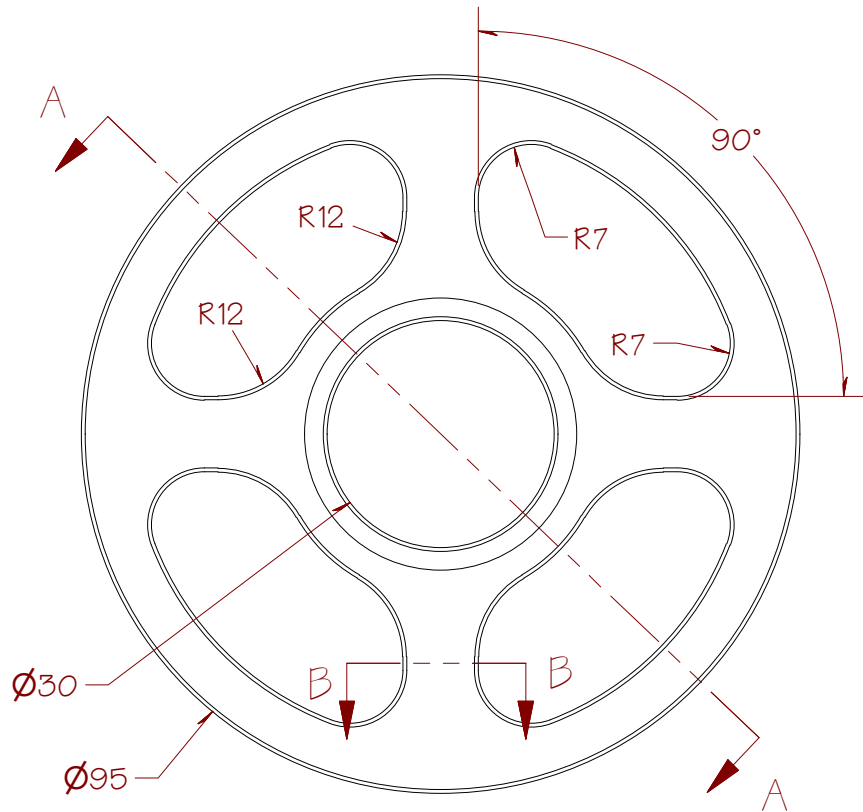


SHEET 21 OF 25

FROM THE DESK OF CURTIS WAGUESPACK	FILE NAME Pivot Arm.ipt
	DESCRIPTION Hardware, Pivot Arm, Mount



ALL DIMENSIONS ARE IN MILLIMETERS

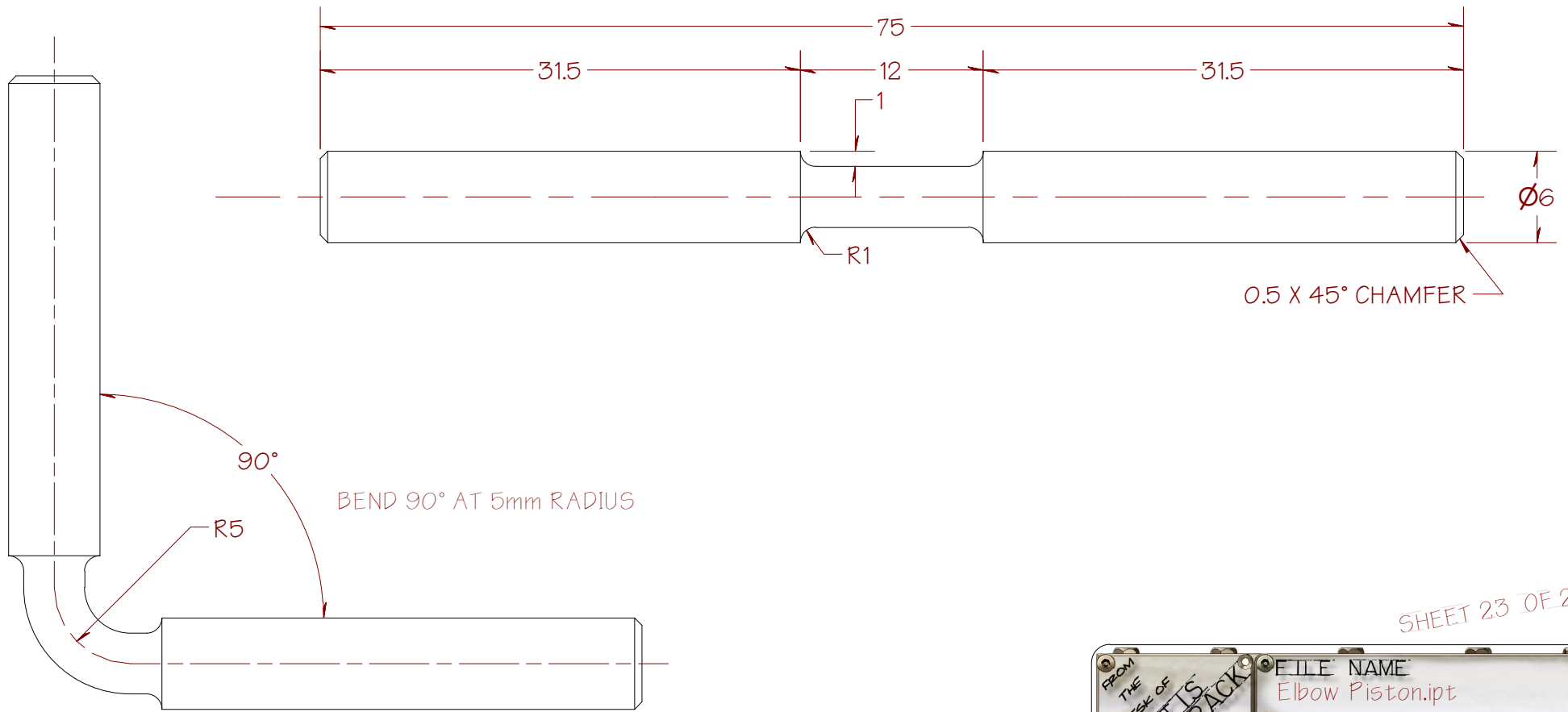


ALL CHAMFERS = 0.5 X 45°

SHEET 22 OF 25

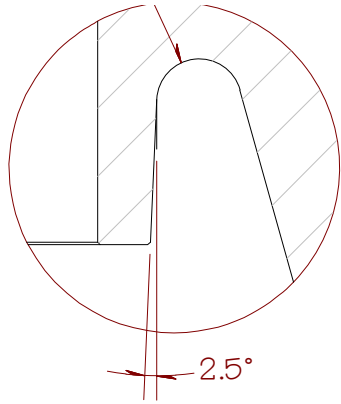
FROM THE DESK OF CURTIS WAGUESPACK	FILE NAME Fly Wheel.ipt
	DESCRIPTION Machined, Aluminum Fly Wheel

ALL DIMENSIONS
ARE IN MILLIMETERS

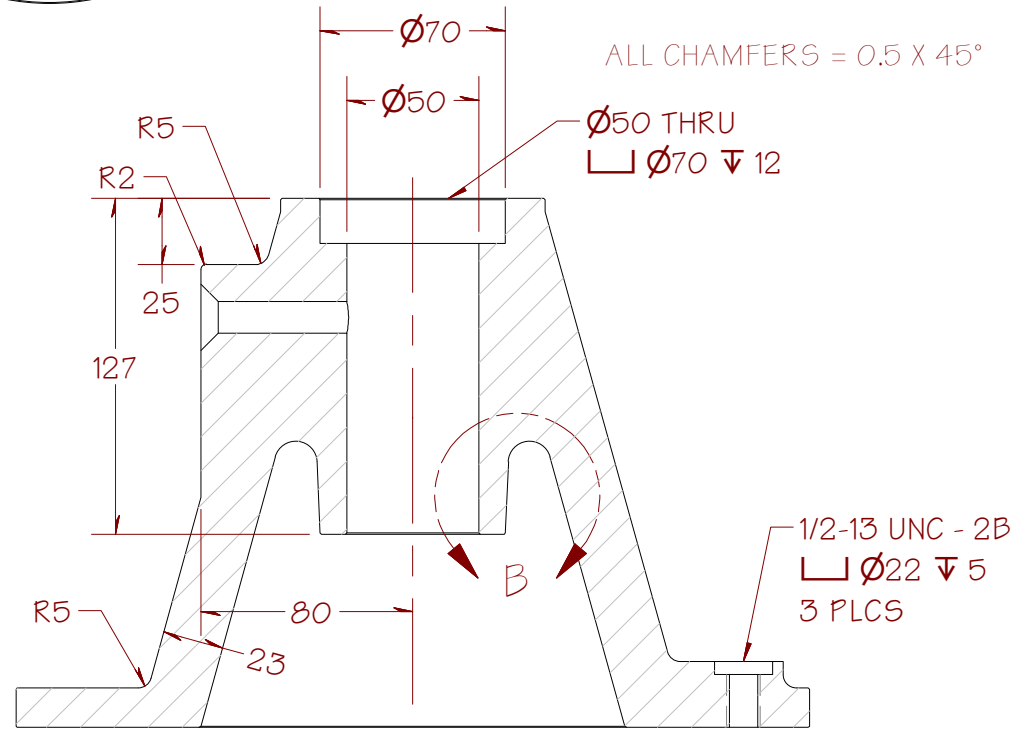
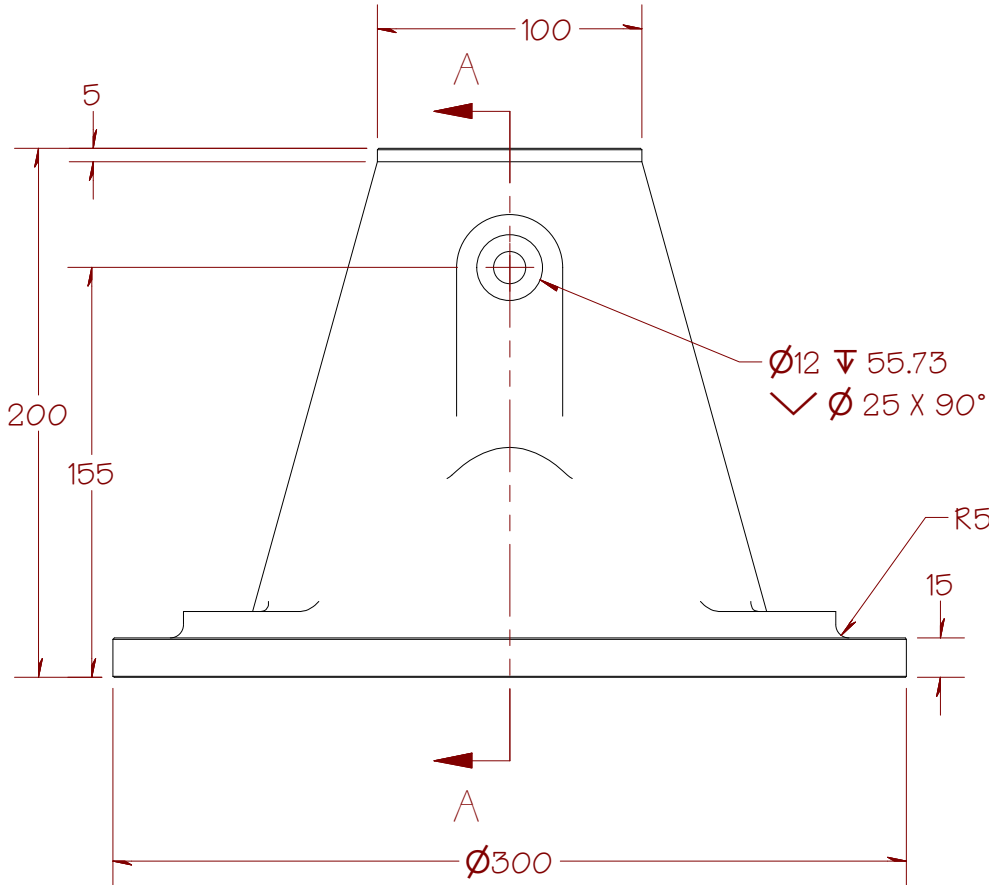
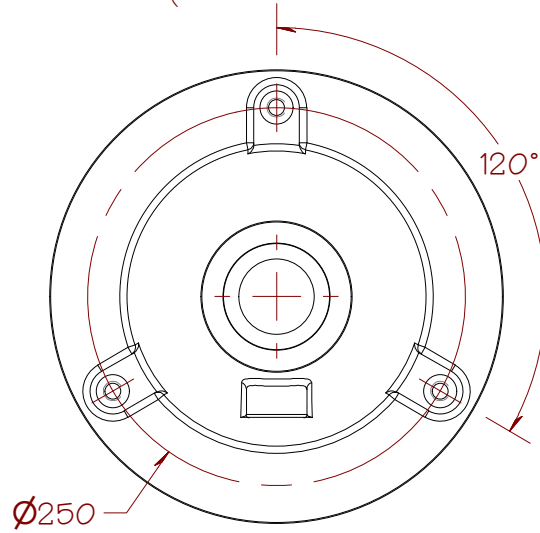


SHEET 23 OF 25

FROM THE DESK OF CURTIS WAGUESPACK	FILE NAME	Elbow Piston.ipt
	DESCRIPTION	Machined, Elbow Piston, Bend 90 Degrees



DETAIL B

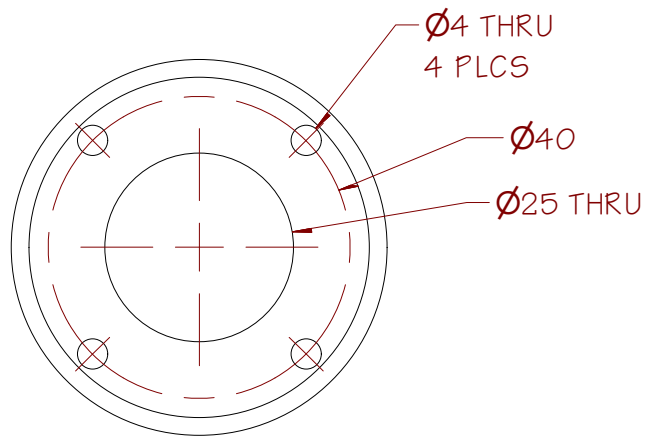


SECTION A-A

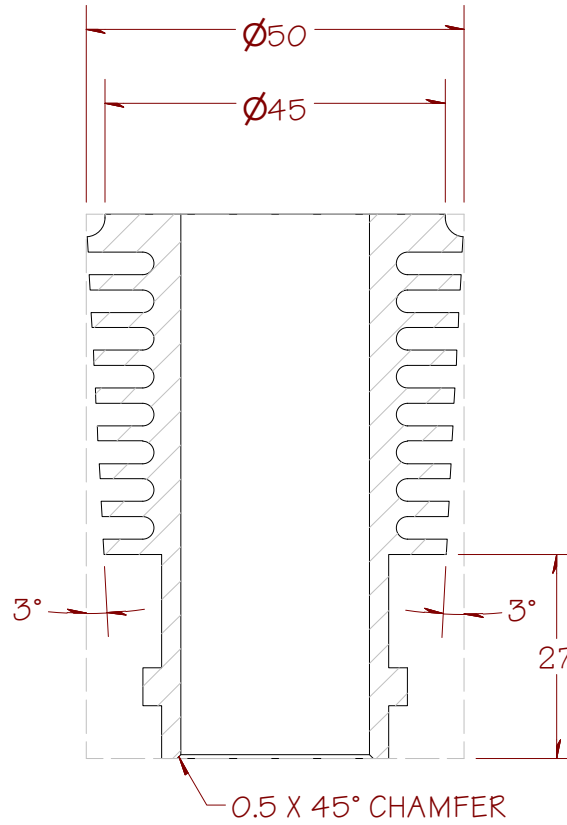
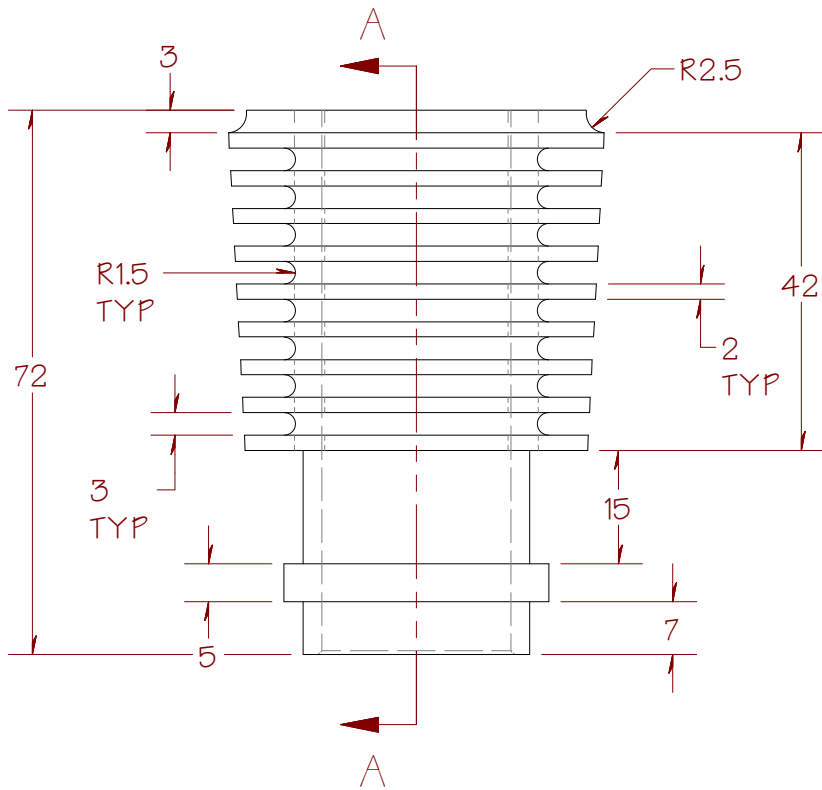
SHEET 24 OF 25

ALL DIMENSIONS ARE IN MILLIMETERS

FROM THE DESK OF CURTIS WAGUESPACK	FILE NAME	Support Base.ipt
	DESCRIPTION	



ALL DIMENSIONS
ARE IN MILLIMETERS



SECTION A-A

SHEET 25 OF 25

FROM THE DESK OF CURTIS WAGUESPACK	FILE NAME	Cylinder.ipt
	DESCRIPTION	Machined, Miniature Cylinder